



07-CUR. SPRINTER VAN
DRILLING INTO THE BODY IS REQUIRED

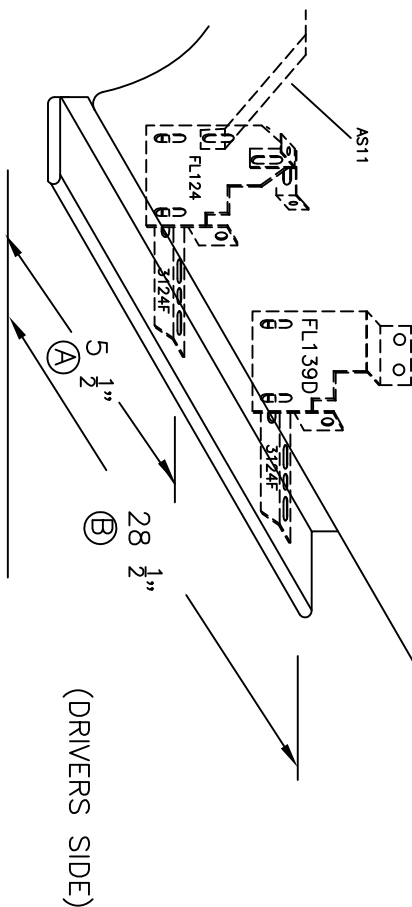
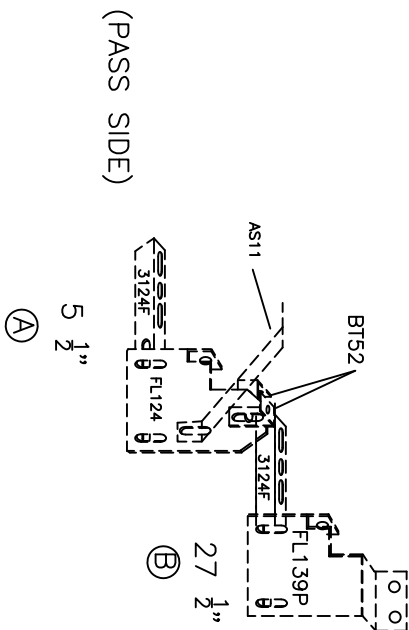
IN354 7/21/08

INSTALLATION PARTS LIST:	QTY.	DESCRIPTION	QTY.	DESCRIPTION
2	RUNNING BOARD	1 DRIVER & 1 PASSENGER	4	HORIZONTAL BRACKET, SUPPORT, 3124F
4	END CAP, 2 LEFT & 2 RIGHT		16	5/16"x 3/4" BOLT
8	3/8"x1 SELF TAPPING SCREW		16	5/16-18 HEX WASHER HEAD NUT
18	#14x3/4" TEK SCREW		2	FLAT BRACKET, FL124
8	1/4x5/8" SQUARE HEAD SCREW		4	BENT TAB BT52, W/HOLE
8	1/4-20 HEX NUT		1	FL139P
1	FL139D			
2	AS11			

ADDITIONAL PARTS MAY BE INCLUDED AND MAY NOT BE USED ON ALL APPLICATIONS.

TOOLS REQUIRED: 5/16" DRILL * 1/2" HEX SOCKET * 1/2" WRENCH * 5/16" NUT DRIVER * 3/8" NUT DRIVER

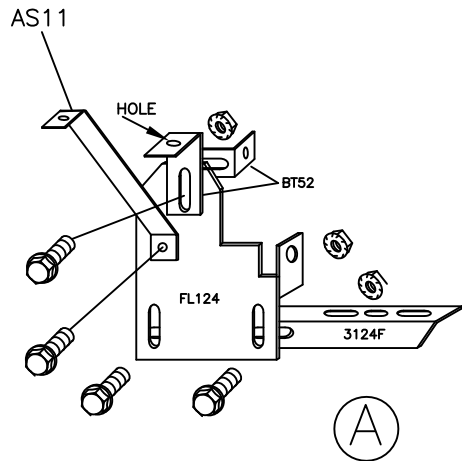
144" AND 170" WHEEL BASE CAB
ONLY



MEASURE FROM THE MUD FLAP TO BRACKET LOCATIONS. MARK THIS DIMENSION ON THE PINCH WELD.

②

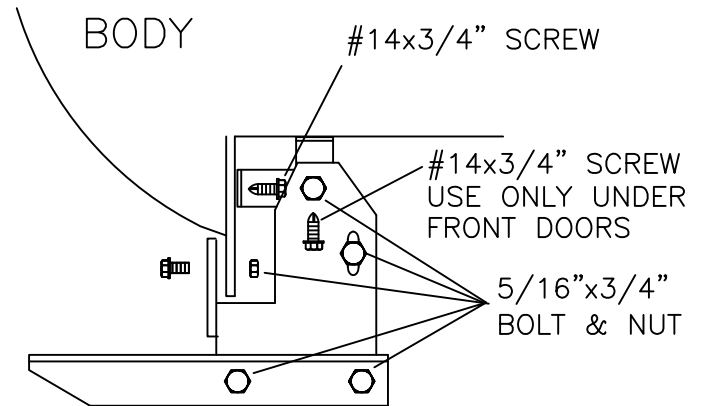
BRACKET ASSEMBLY
ASSEMBLE WITH 5/16" BOLTS



③

FORWARD ASSEMBLY MOUNT TO BODY

PREDRILL A 5/16" HOLE THROUGH THE PINCH WELD. ATTACH FL124 BRACKET (A) TO THE BODY WITH 5/16" BOLT AND NUT, LOOSLY TIGHTEN. ATTACH THE BT52 BENT TAB TO THE BODY PANEL WITH A #14x 3/4" SELF DRILLING SCREW. ONLY DRILL INTO THE FLOOR UNDER THE FRONT DOORS. ATTACH AS11 TO FRONT BRACKETS ONLY WITH 5/16" BOLT & NUT. ATTACH OTHER END TO BODY BEHIND THE FRONT WHEEL WITH #14 X 3/4" SELF DRILLING SCREW.

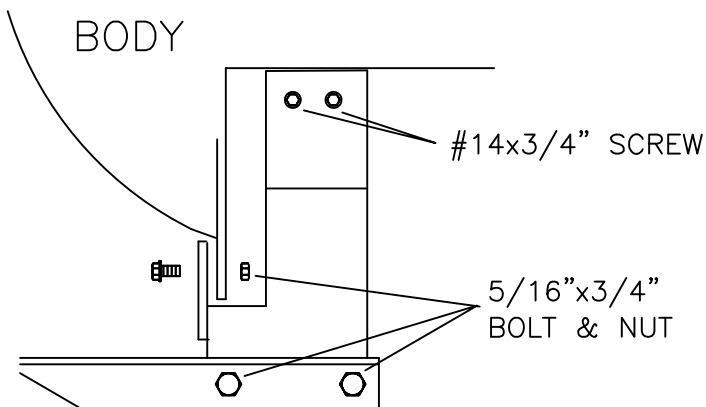


MOUNT AT LOCATIONS SHOWN AT ①

④

SECOND BRACKET MOUNTING

PREDRILL A 5/16" HOLE THROUGH THE PINCH WELD. ATTACH FL139D BRACKET TO THE BODY WITH 5/16" BOLT AND NUT, LOOSLY TIGHTEN. ATTACH THE TOP TO THE CROSS BRACE WITH #14 X 3/4" SELF DRILLING SCREWS.

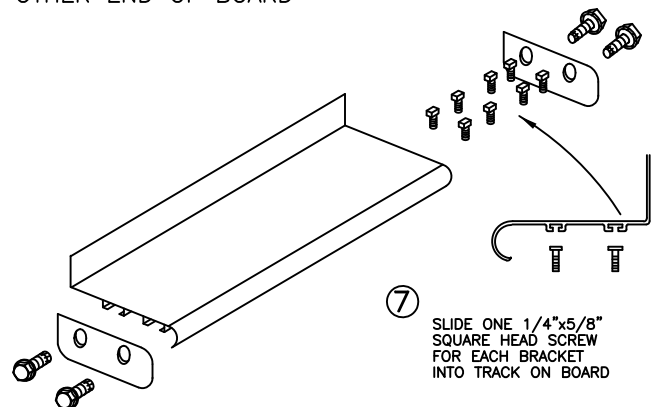


MOUNT AT LOCATIONS SHOWN AT ②

⑤

(EXTRUDED & DIAMOND
BOARDS ONLY)

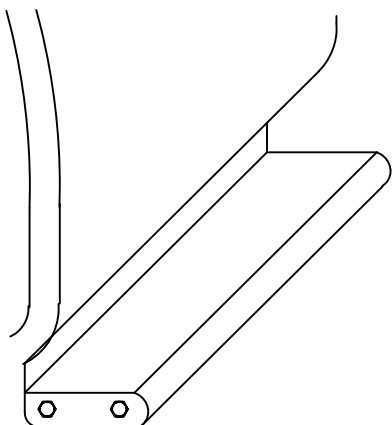
FASTEN END CAP TO BOARDS WITH 3/8" SELF TAPPING BOLT. INSTALL END CAP TO OTHER END OF BOARD



BOARDS WITH WELDED END CAPS WILL ONLY NEED TO SLIDE IN THE BOLTS INTO THE TRACK IN THIS STEP.

⑥

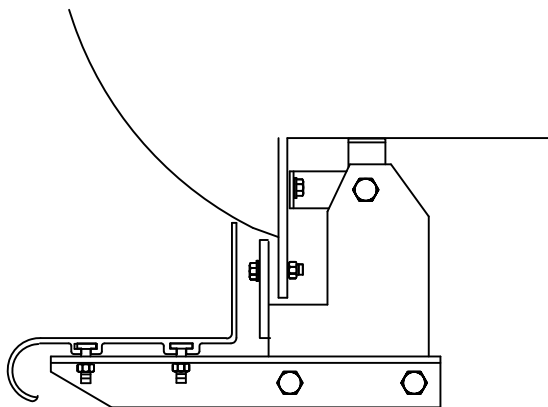
HOLD BOARD IN PLACE, WITH THE REAR RESTING ON THE BACK BRACKET



NOTE: BE SURE THAT 1/4" BOLTS ARE PLACED INTO THE BRACKET STEP SUPPORT

⑦

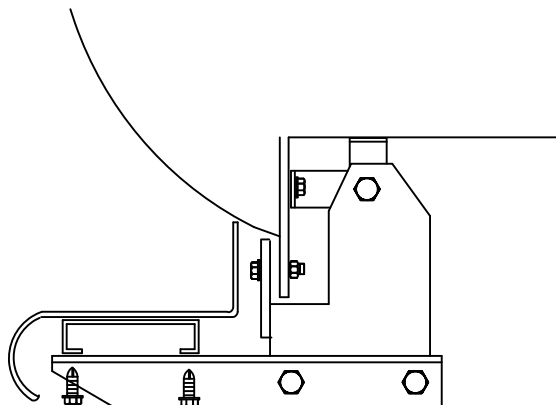
(EXTRUDED & DIAMOND BOARDS ONLY)



SECURE BOARD TO BRACKET WITH 1/4" NUTS

PLASTIC MOLDED BOARDS ONLY

⑧



ATTACH BOARD TO BRACKETS WITH 3/4" #14 SELF DRILLING SCREWS.

⑧

WITH BOARD LEVEL TIGHTEN ALL LOOSE BOLTS

IN354

⑨

REPEAT FOR OTHER SIDE