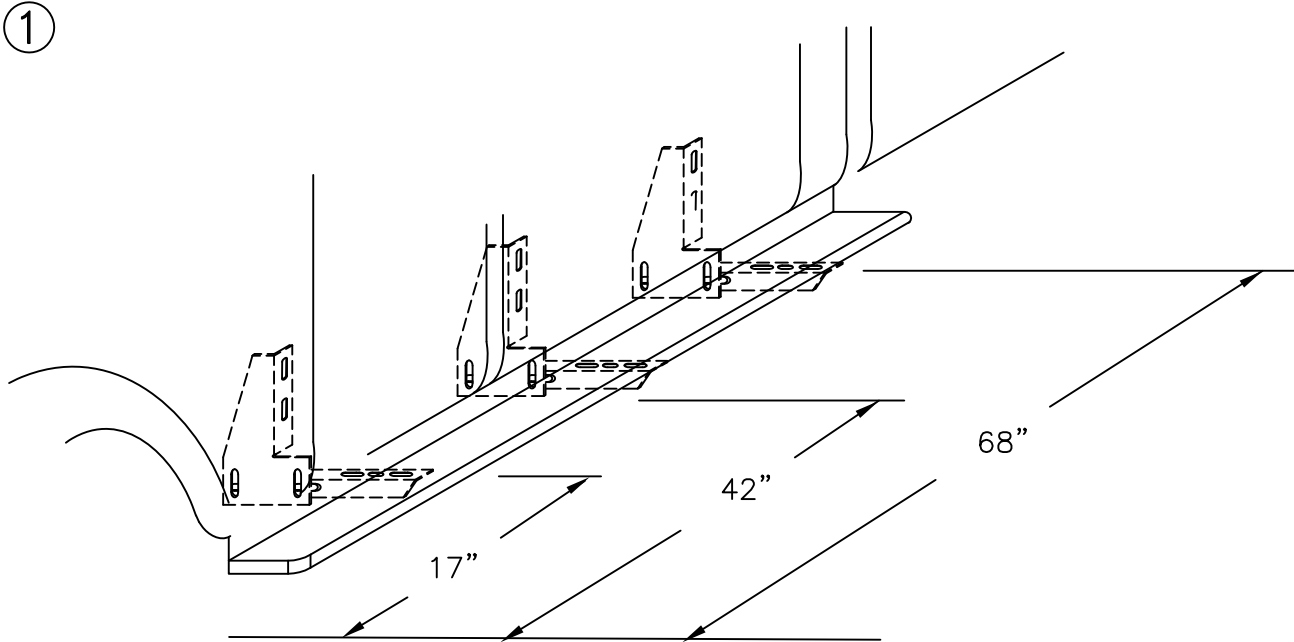


YOUR BRACKETS INSTALL IN FACTORY HOLES

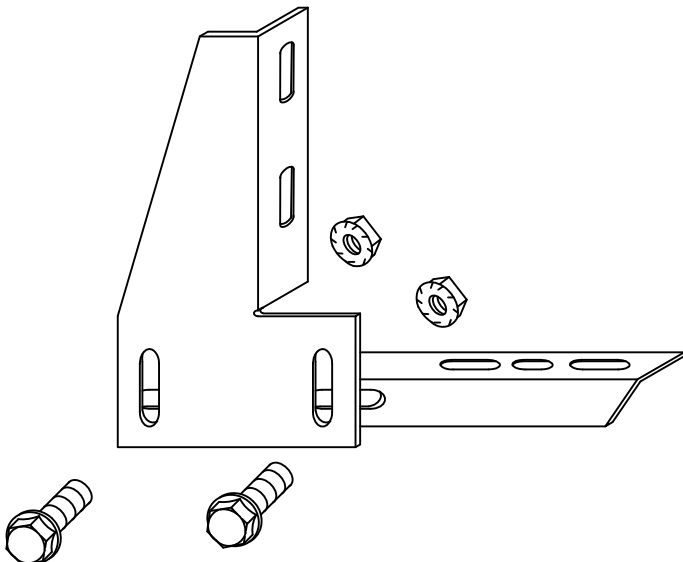
TOOLS REQUIRED: 5/16" DRILL \* 1/2" HEX SOCKET \* 1/2" WRENCH \* 5/16" NUT DRIVER \* 3/8" NUT DRIVER



(DRIVERS SIDE SHOWN)  
MEASURE FROM FRONT WHEEL WELL TO DIMENSIONS SHOWN  
THERE ARE FACTORY HOLES AT OR VERY CLOSE TO THESE LOCATIONS

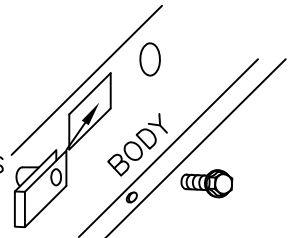
②

BRACKET ASSEMBLY  
ASSEMBLE WITH 5/16" BOLTS

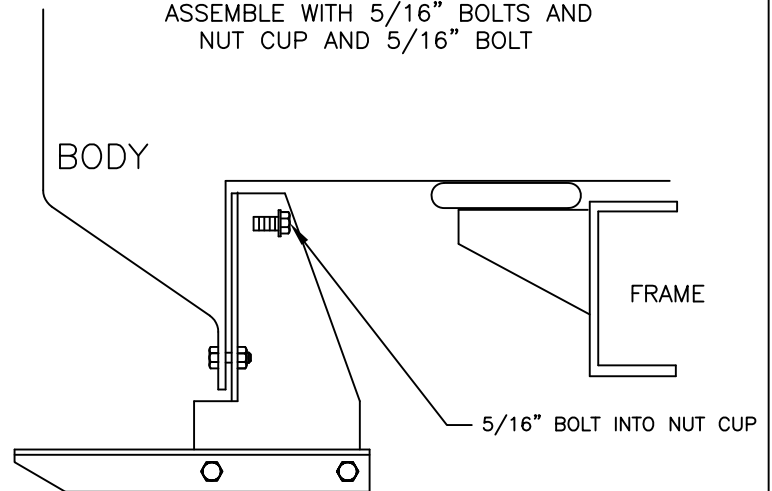


③

SLIDE NUT CUP INTO BODY  
HOLES AT BRACKET LOCATIONS



ASSEMBLE WITH 5/16" BOLTS AND  
NUT CUP AND 5/16" BOLT

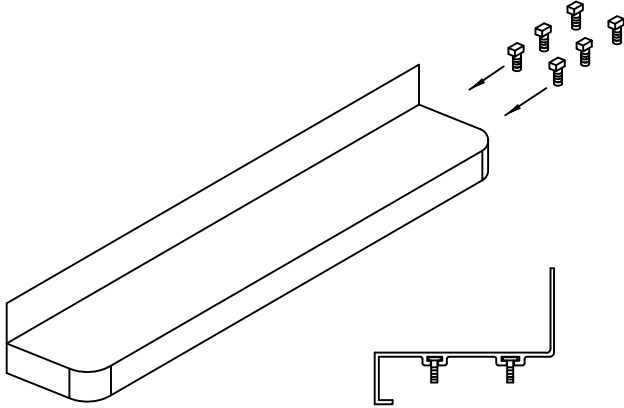


MOUNT AT LOCATION SHOWN AT ①

YOUR BRACKETS INSTALL IN FACTORY HOLES

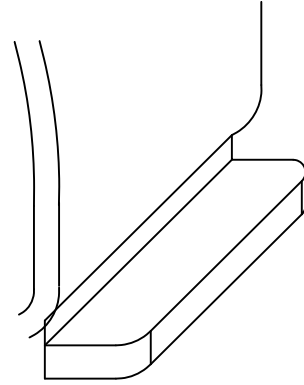
④

PROCEED TO STEP 7 IF PLASTIC BOARDS ARE TO BE INSTALLED.



SLIDE ONE 1/4" X 5/8" SQUARE HEAD SCREWS INTO EACH TRACK FOR EACH BRACKET.

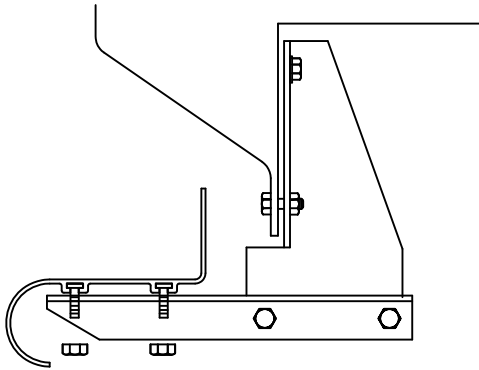
⑤



HOLD THE BOARD IN PLACE WITH IT RESTING ON THE BRACKETS.

BE SURE THAT THE 1/4" BOLTS ARE PLACED INTO THE SLOTS IN THE BRACKET STEP SUPPORT

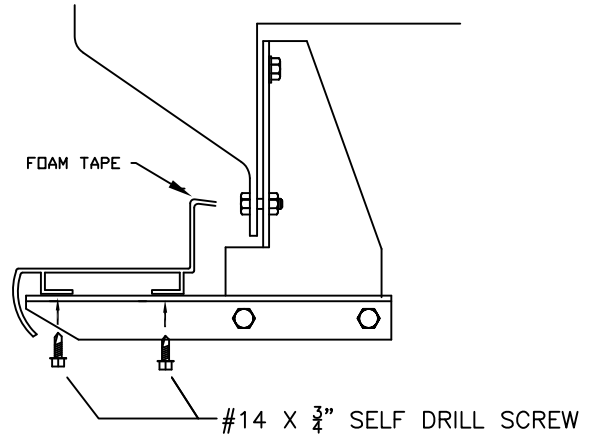
⑥



SECURE BOARD TO BRACKET WITH 1/4" NUTS

⑦

FOR PLASTIC BOARDS, APPLY FOAM TAPE AND STEP TREAD TO BOARD. ATTACH THE BOARD TO THE BRACKETS WITH SELF DRILLING SCREWS.



⑧

WITH BOARD LEVEL TIGHTEN ANY LOOSE BOLTS

REPEAT FOR OTHER SIDE