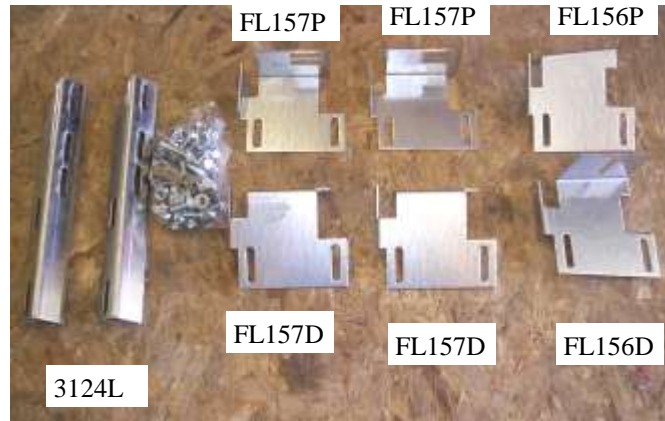


Hardware included shown on right.

Tools required:

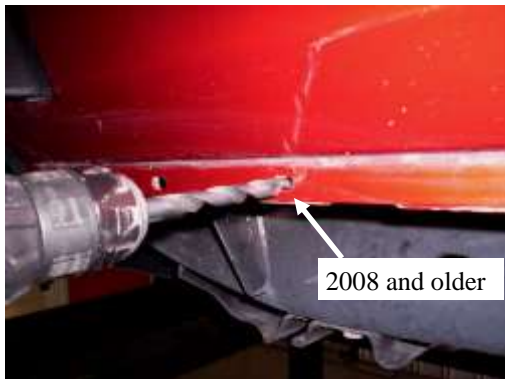
- 1/2" Standard socket
- 1/2" Wrench
- 13mm socket
- 3/8" nut driver
- Drill
- 11/32 drill bit

-Painting your Premier board is not necessary. The board is made with UV protected TPO plastic that will resist fading and cracking from the sun.



Included hardware

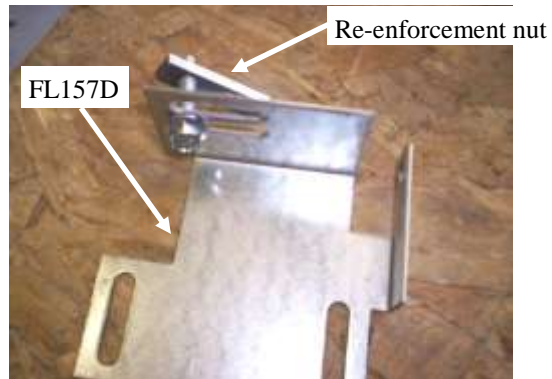
1)



The bracket locations should be measured from front of pinch weld to approx. locations. The front 12", middle 36 and rear at 62". You may need to drill for clearance.

**Note: 2009 and newer vehicles have hole in pinch weld so drilling is not required.**

2)



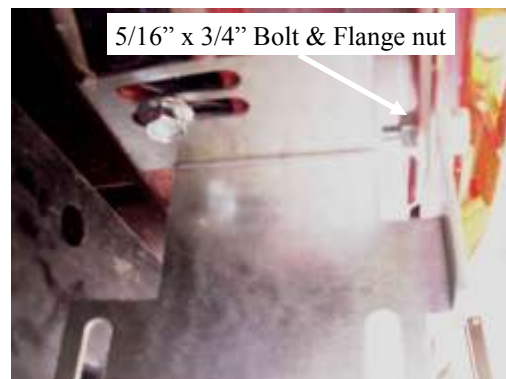
Attach bolt and re-enforcement nut onto the bolt engaging a couple threads as shown. Brackets with 2 slots are for the front and middle locations and the bracket with 1 slot is for the rear location.

3)



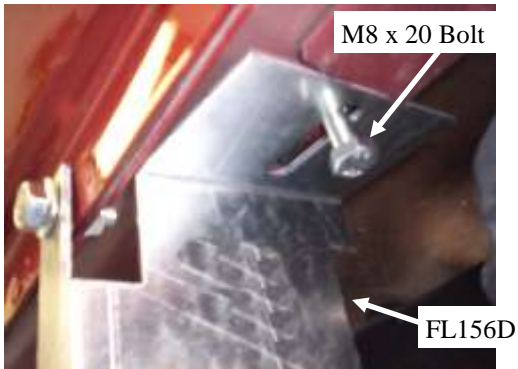
You will need to insert the re-enforcement nuts into hole under vehicle at the measured locations as stated in Fig. 1

4)



Straighten bracket and bolt through pinch weld as shown above. Tighten bolts.

5)



Attach bracket with 1 slot to vehicle at measured location 62". The rear locations use an 8mm bolt and a factory threaded hole. Straighten bracket and bolt through pinch weld.

6)



Attach channels to the body mounting Brackets you just installed, hand tighten making sure to keep channels level to body.

7)



Place the board on the brackets. Attach with self drilling screws. You may need to adjust channels for level and Straightness.

8)



Apply step tread and logo. Repeat steps for opposite side.

