

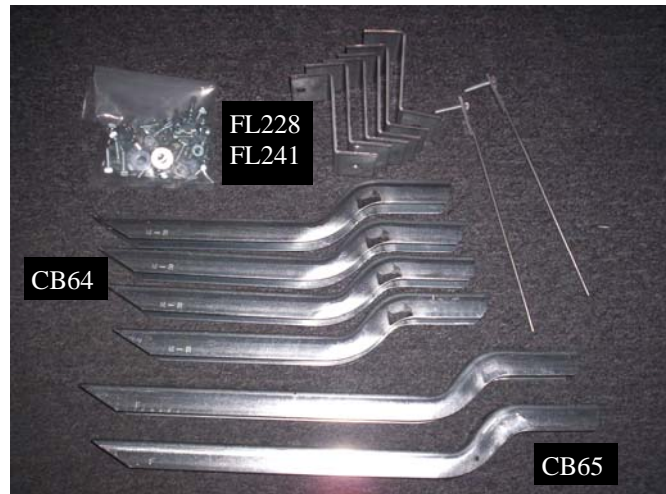
No drilling into vehicle is required

Hardware included shown on right.

Tools required:

- 1/2" Standard socket
- 1/2" Wrench
- 13mm socket
- 3/8" nut driver
- Drill

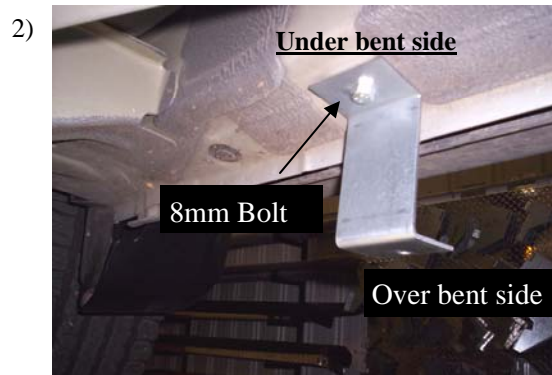
-Painting your Premier board is not necessary. The board is made with UV protected ABS plastic that will resist fading and cracking from the sun.



Included hardware



Brackets will be attached using factory mounting locations at 17 1/2", 36" and 58".



Attach the front two "Z" brackets to factory holes with 8mm bolts. The rear "Z" bracket will attach with supplied bolt/wire and nut. The under bent side of the Z bracket goes against body.



Remove the reward rubber plug and insert the bolt with a wire through the hole as shown. "Fish" the wire towards the rear of the vehicle and insert the bolt through the rear hole.



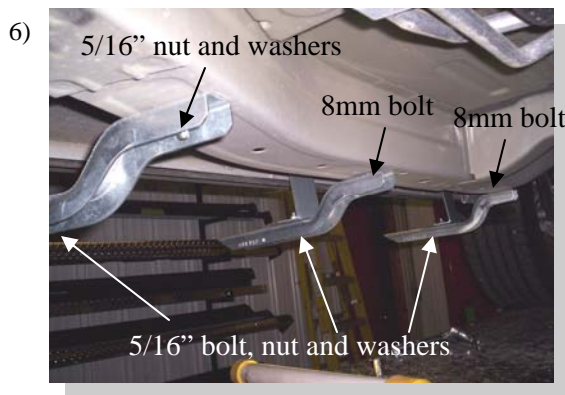
Photo of rear bolt after being installed.
NOTE: It may be easier to install by putting a slight bend in the wire.



Attach CB64 and "Z" bracket to vehicle as shown at the rear location.



Insert 5/16" flanged bolt through CB65 into retaining nut, then insert retaining nut into the forward hole in the frame for the front bracket to mount to.



Attach CB64 to 36" 58" location and CB65 to 17-1/2" as shown. Tighten all hardware.



Place the board on the brackets. Attach with #14 self drilling screws.



Apply step tread and logo. Repeat steps for opposite side.

