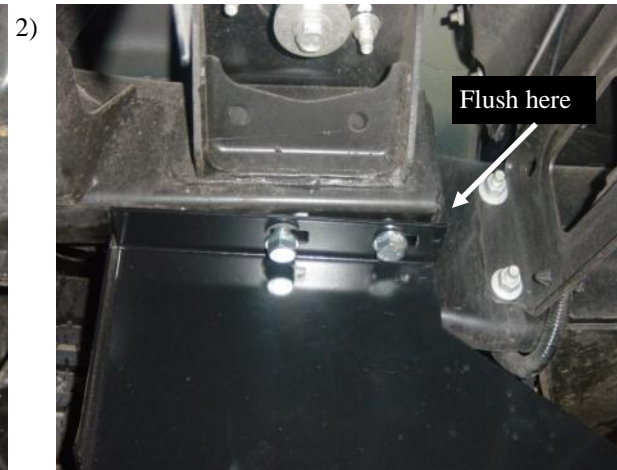
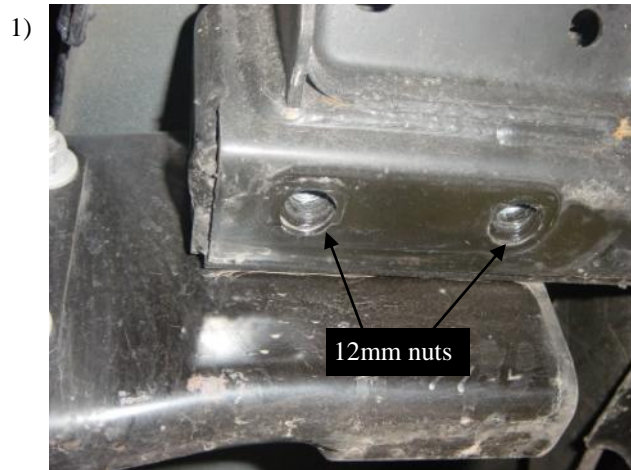
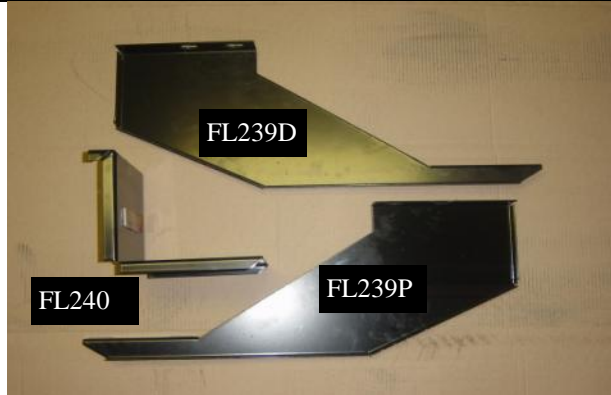


Hardware included shown on right.

Tools required:

- 3/4" socket
- Ratchet
- 3/8" nut driver
- 7/16" socket
- 1/2" socket



At rear of vehicle find the two 12mm nuts inside the frame rails on each side of vehicle.

Insert two 12mm bolts with 12mm washer through slot on FL239D/P and into the 12mm nuts in frame rail as shown. Flush FL239D/P flange with back of frame rail and tighten bolts



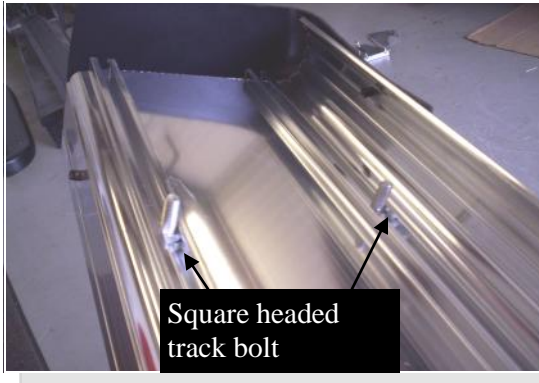
Locate these slots located in the center on the bottom of the rear bumper.



Insert 5/16" flanged bolts through slots with reinforcement nuts. Insert into slots in bumper as shown. With a screwdriver turn the nut on pass side so it is pointing same direction as driver side. Tighten 5/16" flanged bolts.

## FOR DIA BOARD

5)



Insert 4 square head bolts in each track.



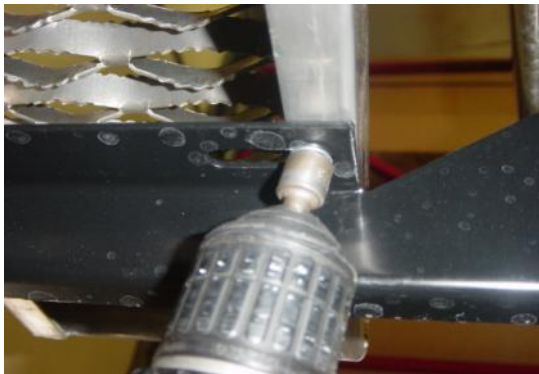
6)



Attach board to brkts by inserting the square head bolts through the slots in the brkt. Attach 1/4" flanged nuts to square head bolts, but don't tighten at this time. Center board left to right and tighten the 1/4" flanged nuts.

## FOR GRIP STRUT BOARD

7)



Set board on top of brkts. Center board left to right and insert a self tapping bolt through each of the slots in the brkts into the board.

