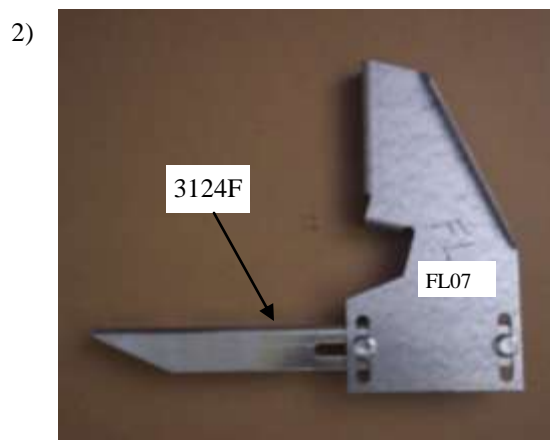




Tools required:

- 1/2" socket,
- 1/2" wrench,
- 3/8" nut driver,
- 18mm socket
- Tape Measure

- 1) Measure back from front wheel well, shown in **Fig. 1**, at the distance of 17", 41", on Standard cab and 62" on Double cab. For full size Crew cab, use another bracket at the 78" location. Mark these bracket location centers.
- 2) Assemble **FL07** to **3124F** using two 5/16" flanged nuts and bolts, shown in **Fig. 2**. But leave loose to adjust board later.
- 3) Attach brackets to vehicle at measurements, 17", 41", and 62" using 5/16" flanged nuts and bolts through the hole in the pinch weld, or 8mm bolts and into factory nut in GMC models **Fig. 3**. **In all bracket locations** remove the rubber plug from the body, shown in **Fig. 4**, insert the clip nut, shown in **Fig. 5**. Attach brackets at these measurements using 5/16" flanged nuts and bolts through the hole in the pinch weld, and 5/16 flanged bolt into the clip nut.
NOTE: GMC models have factory welded nut in the top location as well. Use 8mm bolt instead of the clip nut.



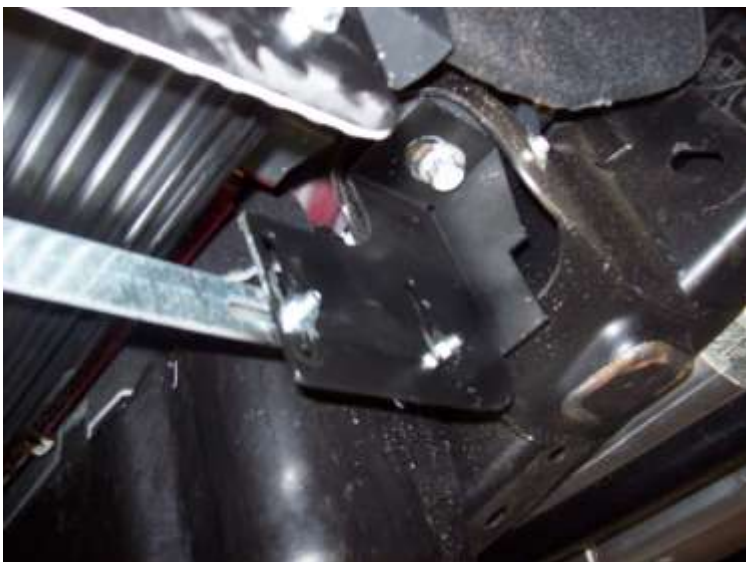


Owens Aluminum IN 529

No drilling into vehicle is required

2015 Chevy/GMC Full Size Pickup
Diesel

6)



On passenger side in front and behind the Diesel DEF tank remove the cab mounting bolt with 18mm socket, slide bolt through top hole of FL508 bracket **Fig 6**, making sure the FL508 is straight when tightening. Then bolt the 3124F onto FL508 with two 5/16 bolts and nuts.

7)



Prepare the running board for installation. Slide square head bolts into each track located on the bottom side of the board. **Fig 7** These will be used to attach the board to the previously mounted brackets. Next attach mud flaps to front end and end cap to rear of board. **Fig 8** Tread tape should face in-ward and match with tread tape on the running board.

8)





Owens Aluminum

IN 529

No drilling into vehicle is required

2015 Chevy/GMC Full Size Pickup
Diesel

9)



Starting with the first bracket location adjust 3124F either up or down to make sure the top of the running board sits flush with the bottom of the vehicle. After the board is level and even front to back, using 3/4" self tapping screws in 3 places each side, **Fig 9** attach the front mud flap to the inner fender well. Be sure to mount into metal.

Tighten all remaining nuts and bolts. Make sure every one is tight to reduce rattling.

10



Secure the running board to the brackets with 1/4" nuts. Making sure one last time the running board is level tighten the nuts on the bolts to secure the board. **Fig 10**

Repeat process on other side.