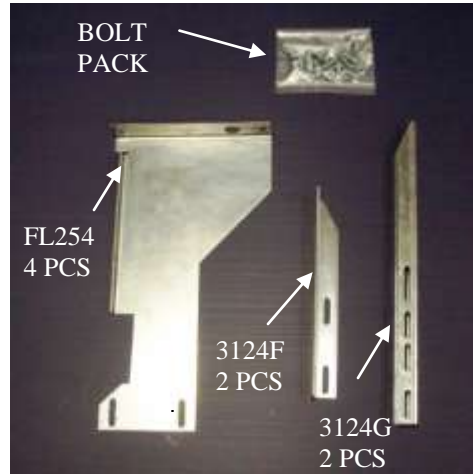


Hardware included shown on right.

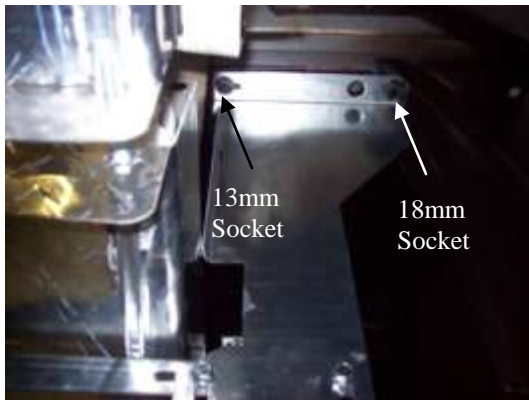
**NO DRILLING INTO VEHICLE IS REQUIRED!**

Tools required:

- 1/2" Socket
- 7/16" socket
- 1/2" Wrench
- 13mm Socket
- 18mm Socket
- 7/16" Nut Driver on Drill
- Torx 30
- 5/16" Drill Bit (For Stone Guard)



1)



Locate the front bed cross member. Remove the two OEM bolts with a 13mm and 18mm Socket. Place a FL254 over the holes the bolts were removed from and replace the bolts as shown in the image above.

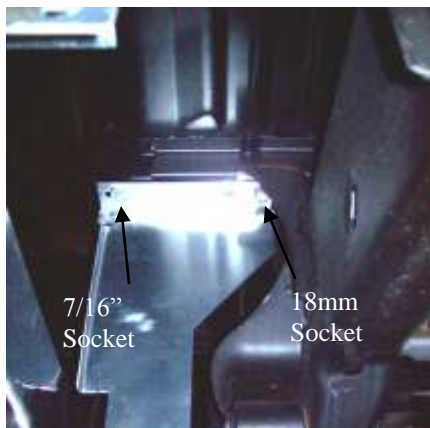
2)



Push jack nut into hole all the way to flange in 2nd cross-member on underside of bed and place 1/4" bolt through the jack nut tool then thread into jack nut by holding the tool run the bolt tight with 7/16" nut driver on a drill.

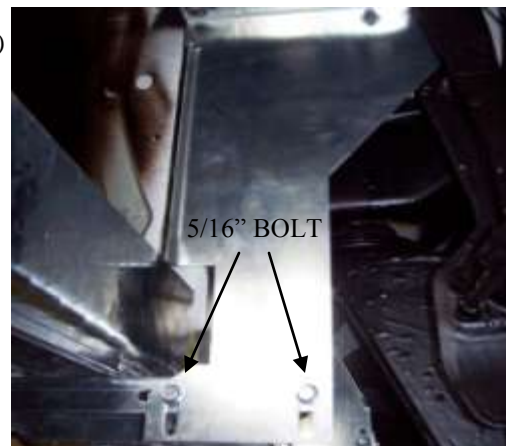
**Same on both driver and passenger side**

3)



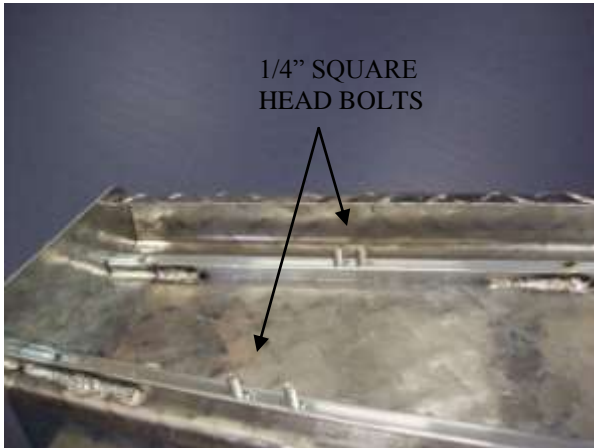
Remove the bolt mounting the bed to frame with 18mm socket like the front location. Place FL254 over hole and replace bolt. In outward location place a 1/4" bolt through flat washer Then through slot in FL254 into the jack nut.

4)



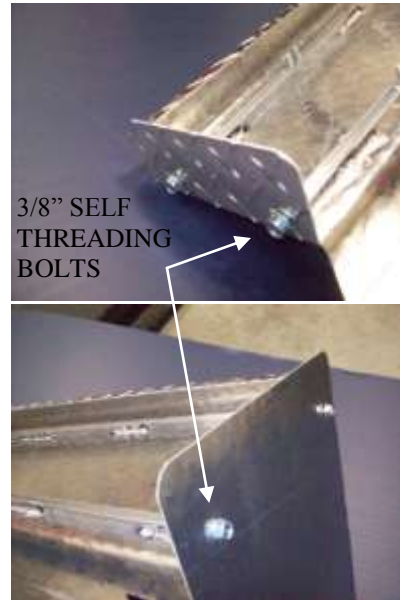
Attach a 3124F angle to front FL254 with (2) 5/16" bolts and nuts. Attach 3124G channel to rear FL254 with (2) 5/16" bolts and nuts. Snug but do not tighten at this time.

5)



Insert (2) square head bolts into each track

6)



Attach stone guard and end cap to each end of running board using (2) 3/8" self threading bolts into tracks that square bolts were put into.

7)



Slide rear rise on board up behind the lower flange on truck bed.  
Slide bolts in track so the threads come through the slots in angle and channel brackets.

8)



Place 1/4" nuts onto the bolts



9)



Level boards and tighten all bolts on brackets.

### **REAR DRIVER STONE GUARD (SHOWN)**

10)



11) Repeat for other side.

Remove the (2) bolts with Torx T30.  
Mark hole location on rear Stone guard where the removed bolts will be replaced.  
Remove Stone guard and drill hole through in the two locations.  
Replace and tighten all bolts.