

**Tools Required**

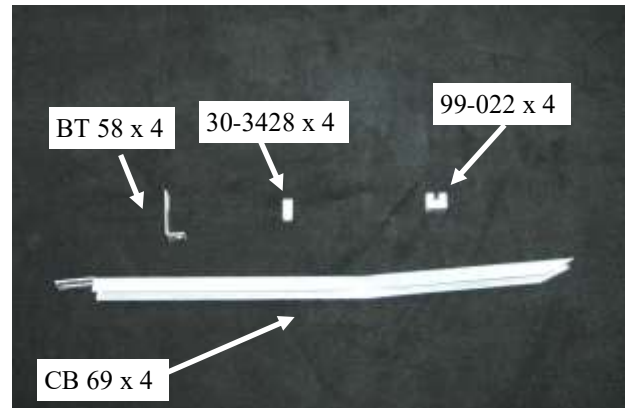
- 1/2" Socket
- Ratchet
- 1/2" Wrench
- 10 mm Socket
- 13mm Socket
- 3/8" Nut Driver on drill
- Tape Measure
- Vice-grip Pliers
- 1/8" Allen Wrench
- Screw Driver
- Torque Wrench
- Loctite (Blue)

**Hardware Included**

- BRACKETS SHOW ON RIGHT
- 1- BOLT PACK

Estimated time of  
Installation: 30 minutes

**No Drilling into Vehicle is Required**



**Torque Specification:**

5/16" Bolts	-	19 Ft Lbs.
1/4" Set Screws	-	10 Ft Lbs.
M8 Bolt	-	11 Ft Lbs.
M6 Bolt	-	8 Ft Lbs.

**Note:**

**Bracket will come out from vehicle  
at a angle on all four brackets.**

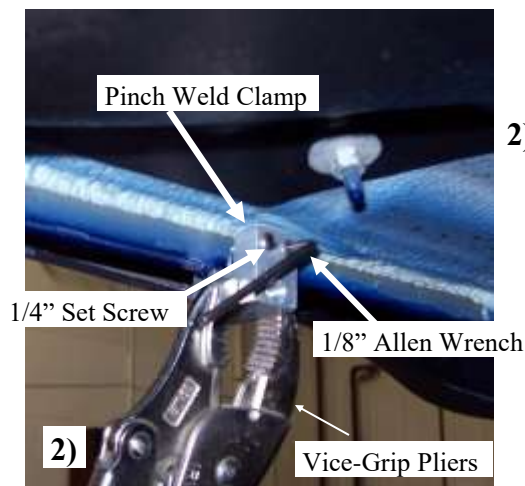


- 1) Measuring from the back side of the pinch weld as shown in photo. mark the inside of pinch weld with a marker.

Driver side at 1st Position = 15 1/2", 2nd = 53 5/8"

Passenger side at 1st Position = 15 1/2", 2nd = 53 5/8"

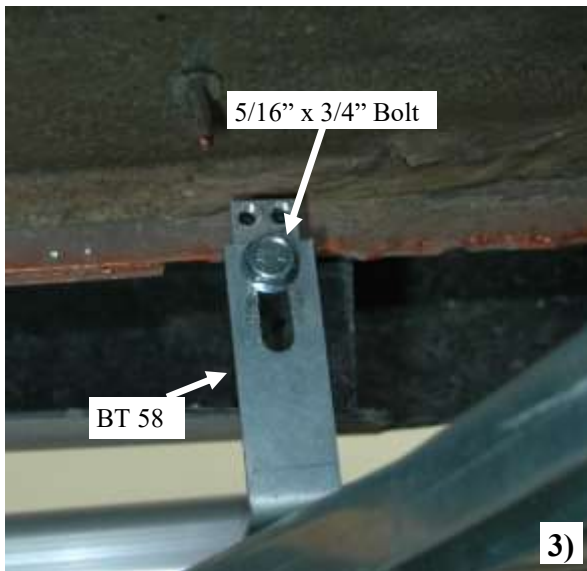
**The marks on pinch weld will be the centers of the 99-022 pinch weld clamps.**



- 2) At each mark mount the pinch weld clamp, you will have to pry the lower plastic away from pinch weld metal to fit clamp onto pinch weld metal, then by tightening the set screws with 1/8" Allen wrench holding with pair of vise grips for leverage.

**The use of Loctite on all set screws is highly recommended  
to insure they do not loosen up.**

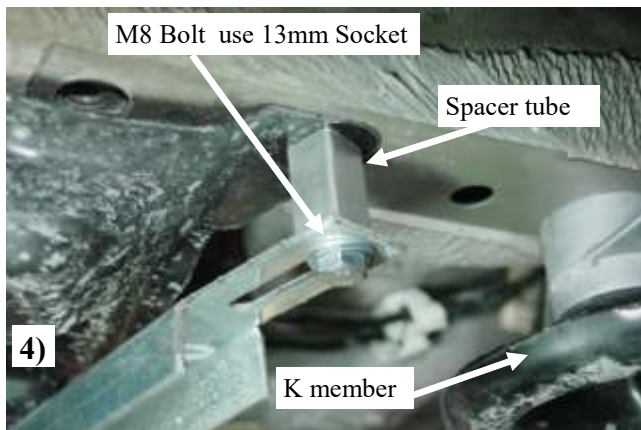
**Make sure set screws are as tight as possible.**



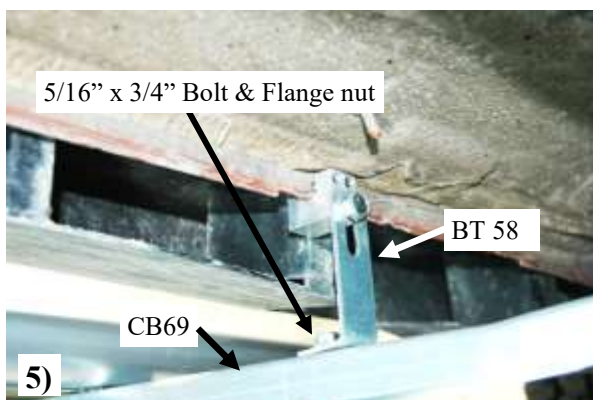
- 3) Mount BT 58 to pinch weld clamp with 5/16" x 3/4" bolt  
On all the pinch weld clamps 99-022  
Leave bolts loose for adjustment

As shown in photo. **Picture 3**

This will be the same for both sides of vehicle.



- 4) For 1st position on both side locate the bolt between K member and exhaust hanger, loosen and remove the bolt with 13mm socket.  
**Located @ 6 1/2" on Driver and 7 1/2" on Passenger side.**  
Place a washer on the M8 x 50mm bolt supplied in bolt pack put bolt through the tab of the CB 69 then place a spacer tube onto the bolt and thread into the tapped hole in frame in between the reinstall bolt leave loose for adjustment. **Picture 4**



- 5) Mount the CB69 channel onto BT58 with a 5/16" x 3/4" bolt and flange nuts. **Picture 5**  
**Leave loose for adjustment at this time.**

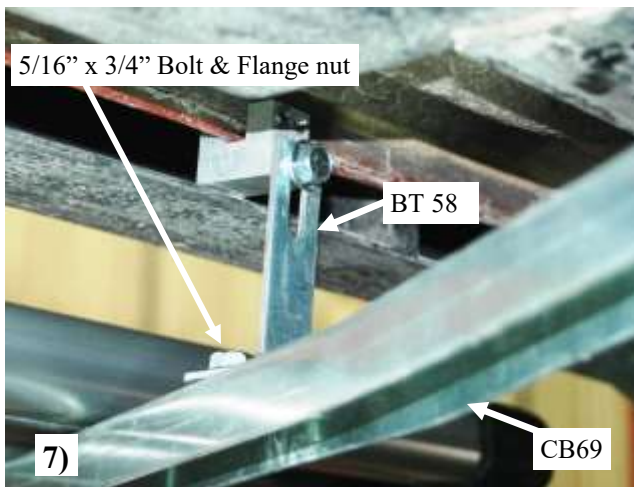
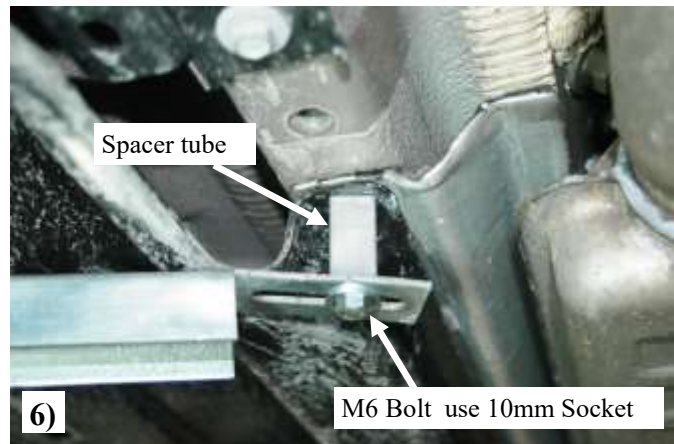
- 6) In the rear position locate the M6 bolt holding the steel shroud on under side of vehicle across from the pinch weld clamps locations.

**Picture 6**

**Located @ 53 5/8" on Driver and Passenger side.**

Remove the M6 bolts with 10mm socket  
Place the M6 x 50mm bolt supplied in bolt pack through a washer then through the CB69 channel brackets tab and spacer tube between CB69 tab and shroud thread into tapped hole in frame. **Picture 6**

**Leave loose for adjustment at this time.**



- 7) Mount the CB69 channel onto BT58 with a 5/16" x 3/4" bolt and flange nuts. **Picture 5**

**Leave loose for adjustment at this time.**

Thread a 5/16" x 3/4" bolt through the top hole in BT58 and thread into pinch weld clamp (99-022) **Picture 7**

Mount the CB69 channel onto BT58 with a 5/16" x 3/4" bolt and flange nuts. **Picture 7**

**Leave loose for adjustment at this time.**



- 8) Slide the end cap off the board then slide (1) hex head bolt into both the front track and rear track for each bracket location. Replace end cap and screw as shown in board instructions. Put 1/4" flange nuts onto bolts and center the board on the vehicle and tighten nuts to secure board to the brackets.





- 9) With the board on the brackets and align from front to back and level the board. Tighten all loose bracket bolts now.

