

Note: No Drilling into body is required.

Hardware included shown on right.

Tools required:

- Drill with 3/8" nut Driver
- 1/2" wrench
- Ratchet
- 1/2" Socket
- 7/16" Socket
- Tape measure
- 1/8" Allen Wrench
- Vise Grip Pliers
- Loctite (Blue)

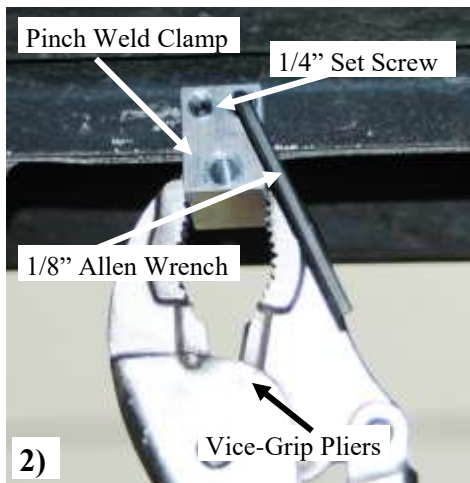
Estimated time of
Installation: 30 minutes

Please read all instructions prior to starting install.



- 1) Measuring from the back side of the front mud flap as shown in photo. Mark the inside of pinch weld with marker.
Driver side Positions: 1st = 10 3/8", 2nd = 34 5/8", 3rd = 55 3/16"
Passenger side Positions: 1st = 10 3/8", 2nd = 34 5/8", 3rd = 55 3/16"

The marks on pinch weld will be the centers of the 99-022 pinch weld clamps.

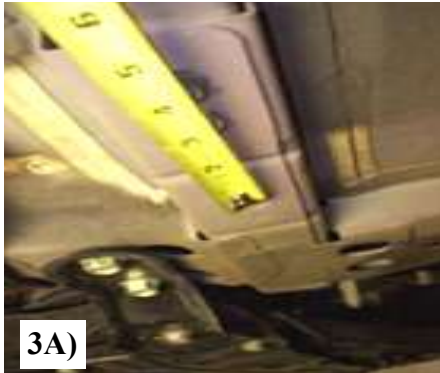


- 2) At each mark, mount the pinch weld clamp 99-022. You will have to pry the lower plastic away to fit clamp onto pinch weld metal. Tighten the set screws with 1/8" Allen wrench holding with pair of vise grips for leverage.

The use of Loctite on all set screws is highly recommended to insure they do not loosen up.

Make sure set screws are as tight as possible.

1st Location



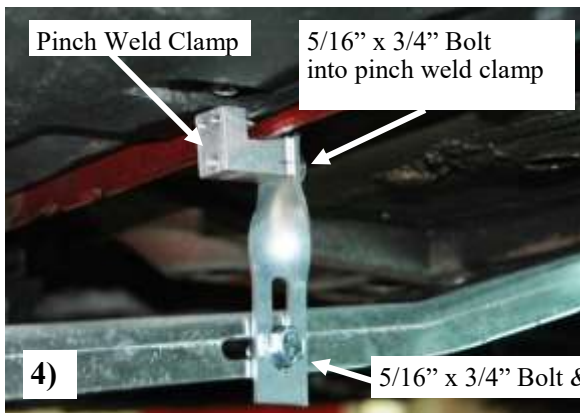
3A)

- 3A)** Measuring from the first hole in the frame, at approximately 4" remove the most rearward of the two bolts.



3B)

- 3B)** Replace the bolt removed put threads through the CB42 bracket tighten back into the hole removed from. **Leave loose for adjustment at this time.**



4)

Pinch Weld Clamp

5/16" x 3/4" Bolt into pinch weld clamp

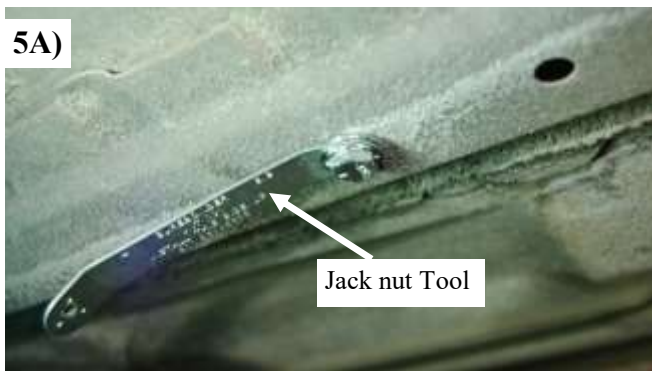
5/16" x 3/4" Bolt & Flange nut

- 4)** Thread a 5/16" x 3/4" bolt through the top hole in TS02 and into pinch weld clamp (99-022) **Picture 4**

Mount the CB42 channel onto TS02 with a 5/16" x 3/4" bolt and flange nuts. **Picture 4**

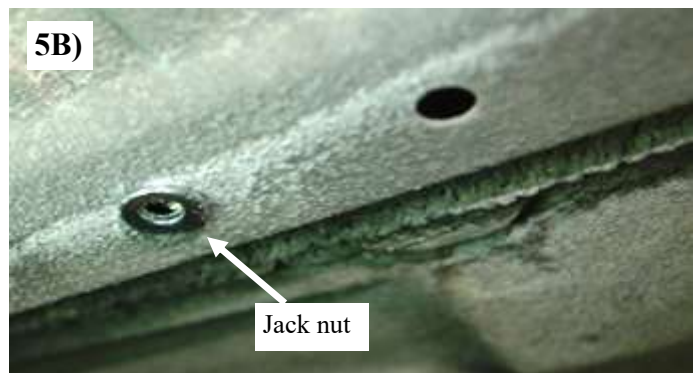
Leave loose for adjustment at this time.

2nd Location



5A)

Jack nut Tool



5B)

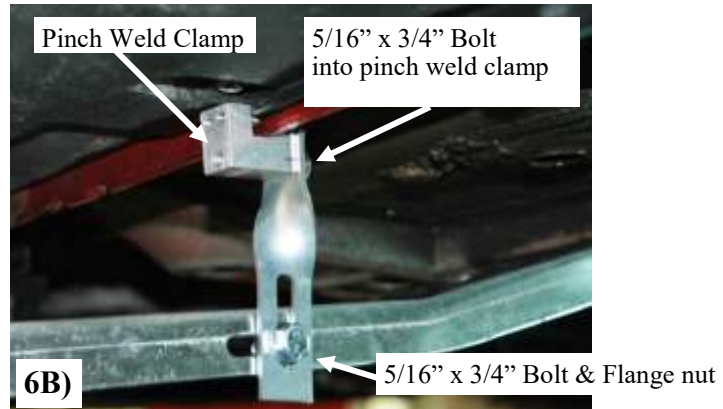
Jack nut

Measuring from the same spot as in step one, at approximately 28" install jack nut as shown in factory hole. After jack nut is put into hole place the 1/4" Bolt through the jack nut tool then thread the bolt into jack nut hand tighten. Tighten with 7/16" socket this will secure the jack nut into hole, **Picture 5A** Remove 1/4" bolt. **Picture 5B**

2nd Location Continued



- 6A)** Put a 1/4" bolt through flat washer then through slot in top of the CB43 channel bracket and thread into the jack nut just installed.
 Leave loose for adjustment at this time.

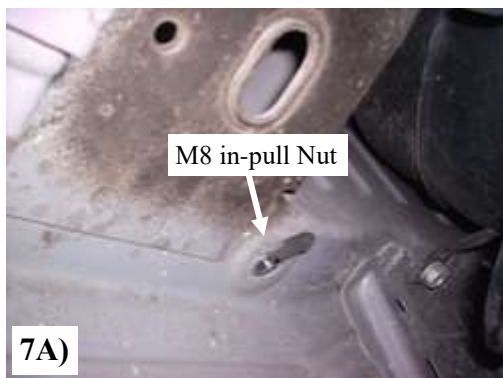


- 6B)** Thread a 5/16" x 3/4" bolt through the top hole in TS02 and thread into pinch weld clamp (99-022) **Picture 6B**

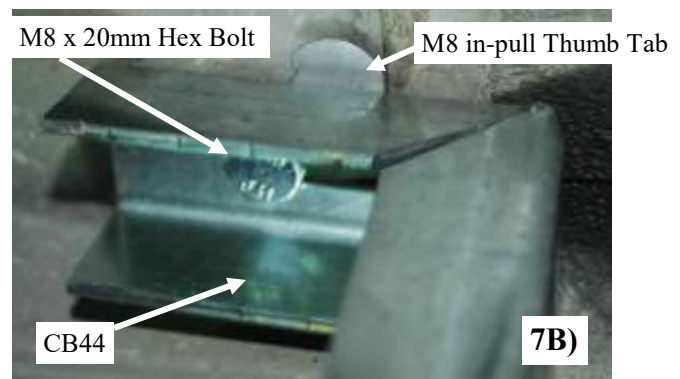
Mount the CB43 channel onto TS02 with a 5/16" x 3/4" bolt and flange nuts. **Picture 6B**

Leave loose for adjustment at this time.

3rd Location



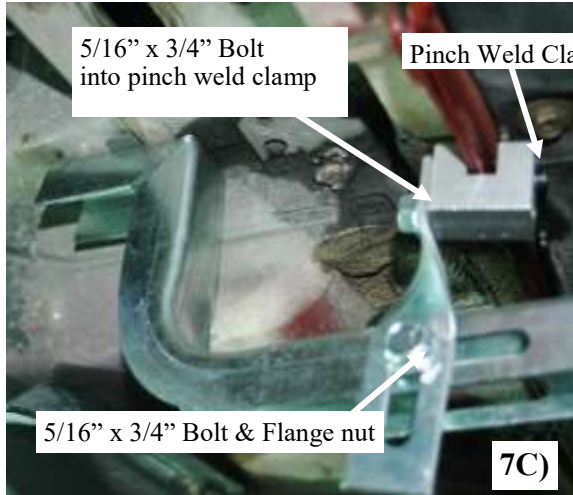
- 7A)** Install one M8 in-pull nut towards the rear of the vehicle in the hole shown just in front of the rear suspension. **Picture 7A**



- 7B)** Put a M8 x 20mm hex bolt through the top slot of CB 44 and thread into the M8 in-pull nut by holding thumb tap attached to nut. **Picture 7B**

Leave loose for adjustment at this time.

3rd Location Continued



7C) Thread a 5/16" x 3/4" bolt through the top hole in TS02 and thread into pinch weld clamp (99-022) **Picture 7C**

Mount the CB44 channel onto TS02 with a 5/16" x 3/4" bolt and flange nuts. **Picture 7C**

Leave loose for adjustment at this time.



8) Place the board on the brackets and align from front to back and level the board. Tighten all loose bracket bolts now.



9) With board level and properly aligned, attach to the brackets with 3/4" long self drilling screws.



Repeat all steps for opposite side.



Enjoy