



# 2015 Colorado/ Canyon IN 602 Full Length

Product No.  
10-1310

### Tools Required

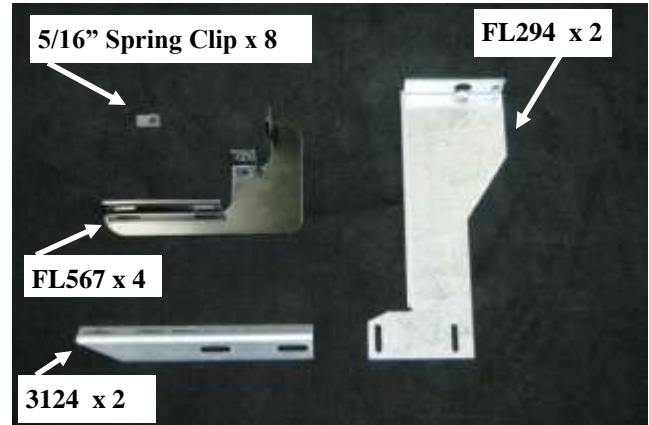
- 1/2" Socket
- Ratchet
- 1/2" Wrench
- 18mm Socket
- 3/8" Nut driver on Drill

### Torque Specification:

- 1/4" Bolts - 6 Ft Lbs.
- 5/16" Bolts - 19 Ft Lbs.
- M12 Bolts - 67 Ft Lbs.

### Hardware Included

- BRACKETS SHOW ON RIGHT
- 1- BOLT PACK



### Locate Driver and Passenger Bracket Locations

Measuring from the front wheel well back, mark the following locations on the pinch weld. There will be factory holes in line with these marks that will be

### DRIVER

- LOCATION 1: 13"
- LOCATION 2: 76 1/2"

### PASSENGER

- LOCATION 1: 13"
- LOCATION 2: 75 1/4"



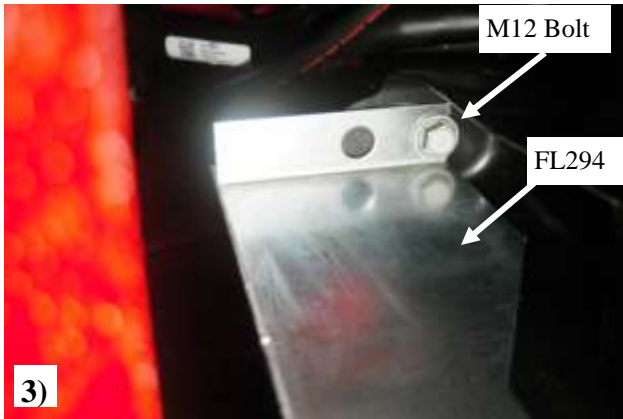
- 1) At each of the measurements above remove the rubber plug in the holes and slide 5/16" spring clips supplied in bolt package into the larger hole slide toward the smaller hole until clip snaps into position.  
**Picture #1**

- 2) Once all spring clips are mounted into position. Place the FL567 bracket up to the inside rocker panel and thread 5/16" x 3/4" bolts into the spring clips. Make sure brackets are onto the vehicle straight before tighten bolts.

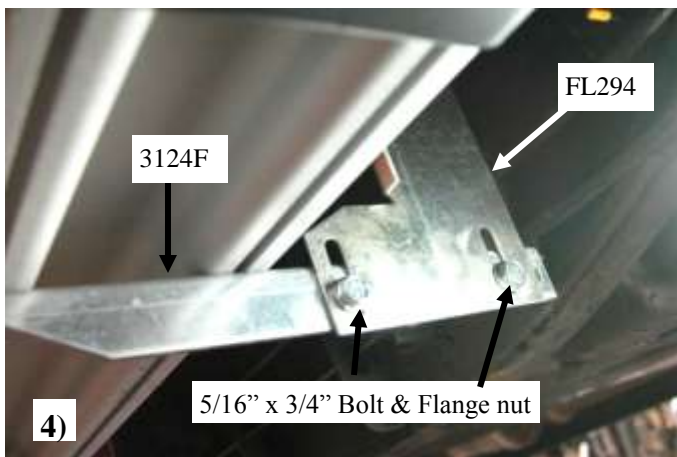
### **Picture #2**

**Repeat in all remaining locations on Cab.**

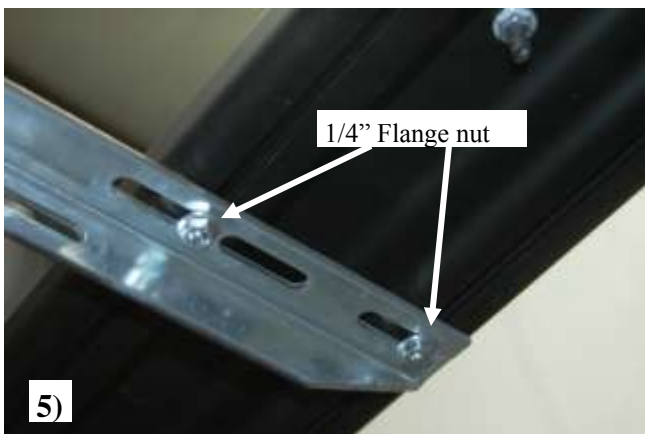




- 3) On the bed of the truck locate the bolt securing the frame to the bed. Remove the M12 bolt with a 18mm socket. Place the bolt through the hole in the FL294 bracket and reinstall into the location remove from. Make sure the FL294 bracket is straight before tightening completely.  
**Picture #3**



- 4) Mount the 3124F angle onto FL294 with two 5/16" x 3/4" bolt and flange nuts.  
**Picture #4**



- 5) Slide hex head bolt into both the front track and rear track for each bracket location.

Place the board on the brackets with the bolts through the slots. Fasten with 1/4" flange nuts.  
**Picture #5**

**Repeat on other side.**

**Level board and tighten any and all loose nuts and bolts on both sides.**



**2015 Colorado/ Canyon  
IN 602 Full Length**

Product No.  
**10-1310**

