

Note: No Drilling into body is required.

Hardware included shown on right.

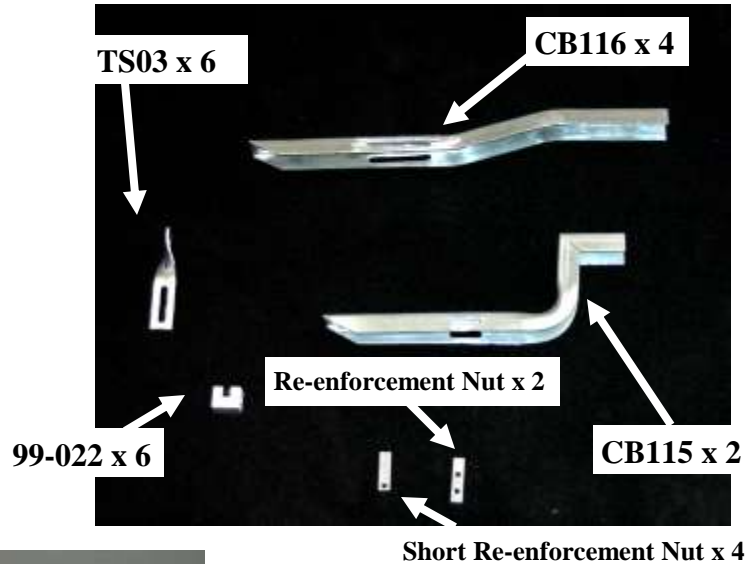
Tools required:

- Drill with 3/8" nut Driver
- 1/2" wrench
- Ratchet
- 1/2" Socket
- Tape measure
- 1/8" Allen Wrench
- Vise Grip Pliers

Torque Specification:

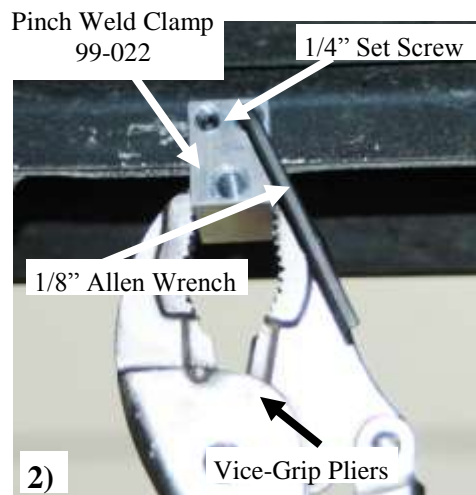
5/16" Bolt - 19 Ft Lbs.
1/4" Set Screw - 10 Ft Lbs.

Please read all instructions prior to starting install.



- 1) Measuring from the back side of the front mud flap as shown in photo. Mark the inside of pinch weld with marker.
Driver side Positions: 1st = 12", 2nd = 39-1/2", 3rd = 62"
Passenger side Positions: 1st = 12", 2nd = 39-1/2", 3rd = 62"

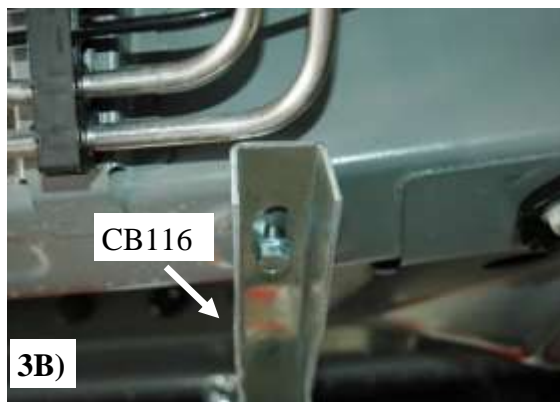
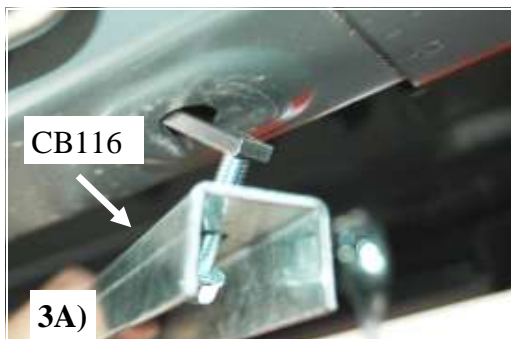
The marks on pinch weld will be the centers of the 99-022 pinch weld clamps.



- 2) At each center mark, mount the pinch weld clamp 99-022. Tighten the set screws with 1/8" Allen wrench holding with pair of vise grips for leverage.

Make sure set screws are as tight as possible.

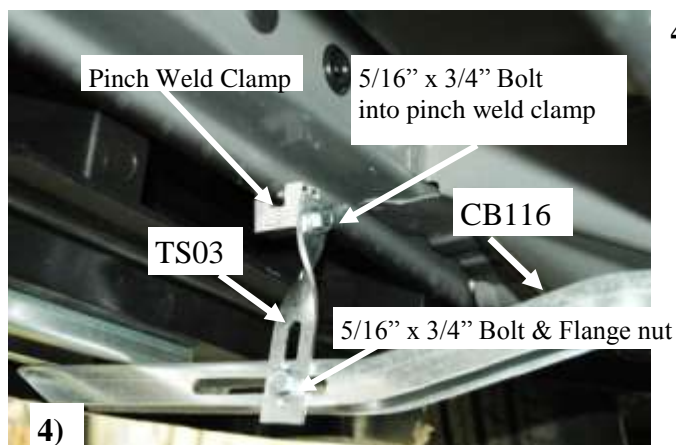
1st Location



- 3) Mount a CB116 using a 5/16"x1-1/2" bolt through CB116 thread into short re-enforcement nut then slide nut into the hole in the frame. **Hole at 11 1/2" from front wheel well. (Photo 3A)**

When tightening, slide bolt up to edge of hole in body to insure maximum support of the short re-enforcement nut.

Hand tighten leave loose for adjustment (Photo 3B)

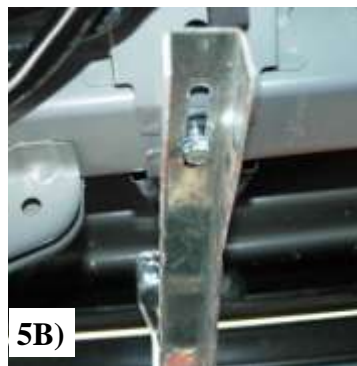


- 4) Thread a 5/16" x 3/4" bolt through the top hole in TS03 and into pinch weld clamp (99-022) **Picture 4**

Mount the CB116 channel onto TS03 with a 5/16" x 3/4" bolt and flange nuts. **Picture 4**

Leave loose for adjustment at this time.

2nd Location

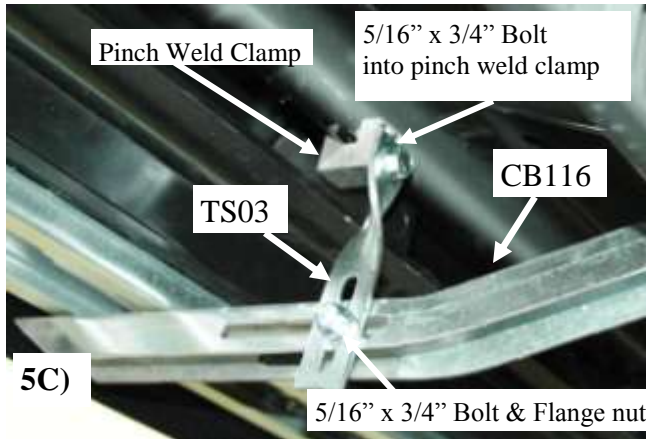


- 5) Mount a CB116 using a 5/16"x1-1/2" bolt through CB116 thread into short re-enforcement nut then slide nut into the hole in the frame. **Hole at 38 1/2" from front wheel well.**

When tightening, slide bolt up to edge of hole in body to insure maximum support of the short re-enforcement nut.

Hand tighten leave loose for adjustment (Photo 3B)

2nd Location Continued

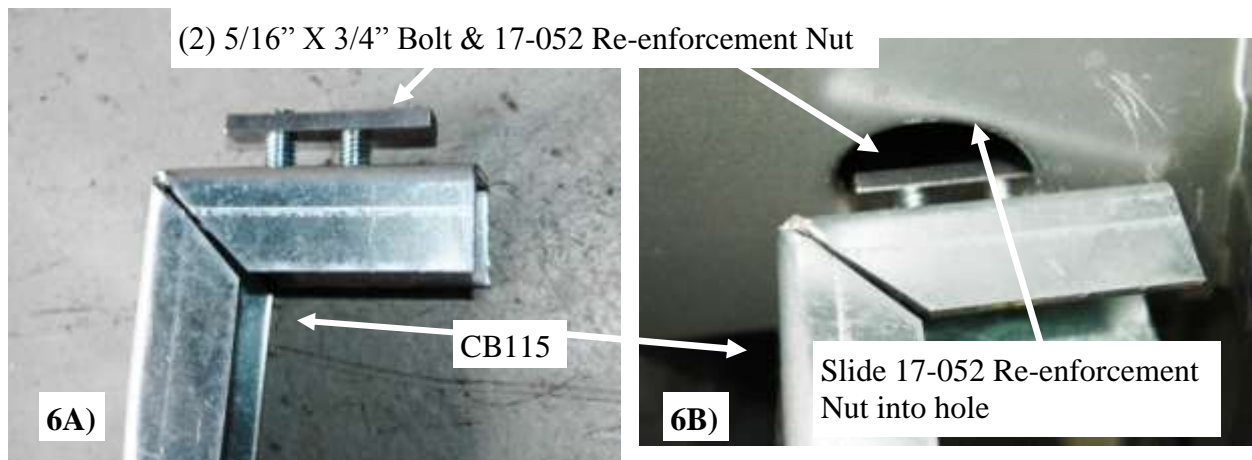


5C) Thread a 5/16" x 3/4" bolt through the top hole in TS03 and into pinch weld clamp (99-022) **Picture 5C**

Mount the CB116 channel onto TS03 with a 5/16" x 3/4" bolt and flange nuts. **Picture 5C**

Leave loose for adjustment at this time.

3rd Location

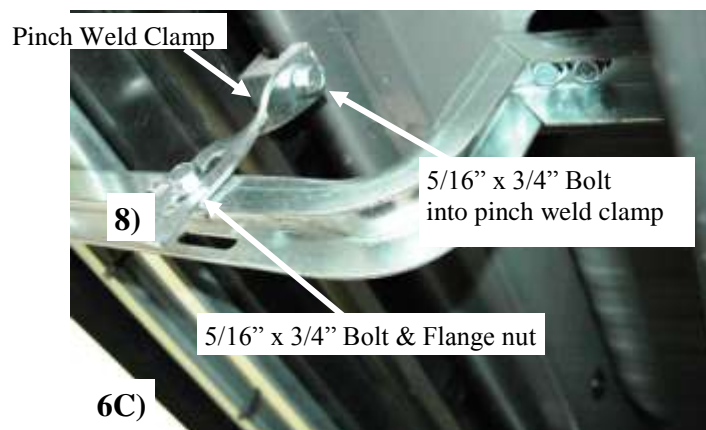


- 6)** Install two 5/16" flanged bolts and 17-052 re-enforcement nut into channel CB115 as in **Picture 6A**. Make sure to position the channel as far forward to the front of the vehicle in the hole. Hand tighten the two bolts once the 17-052 re-enforcement nut is slide up into hole to snug CB115 top tab up to the frame. **Picture 6B**

Hole located at 61 1/4" from front wheel well.

Note: Some brackets will angle toward rear of vehicle.

3rd Location Continued



- 6C)** Thread a 5/16" x 3/4" bolt through the top hole in TS03 and thread into pinch weld clamp (99-022)
Picture 6C

Mount the CB115 channel onto TS03 with a 5/16" x 3/4" bolt and flange nuts. **Picture 6C**

Leave loose for adjustment at this time.



- 7)** Place the board on the brackets and align from front to back and level the board. Tighten all loose bracket bolts now.



- 8)** Apply foam tape to top edge of board



- 9) With board level and properly aligned, attach to the brackets with 3/4" long self drilling screws.

Repeat all steps for opposite side.



Enjoy