

Hardware included shown on right.

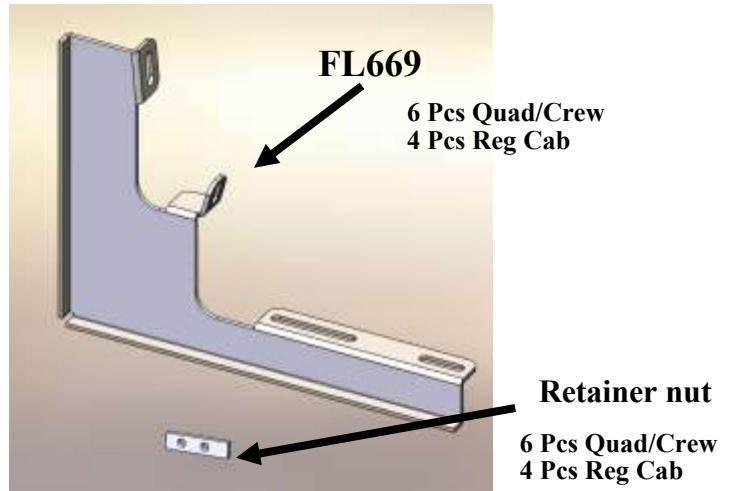
Tools required:

- 1/2" socket
- 1/2" wrench
- 3/8" Nut driver on Drill
- Tape measure

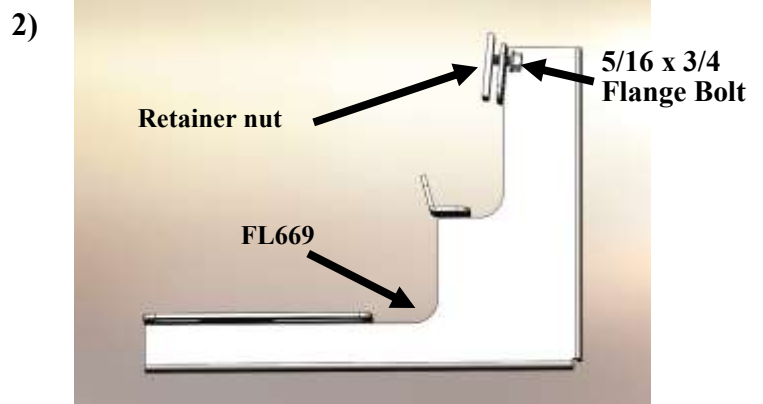
Estimated time of
Installation:
35 minutes

NOTE CREW CAB SHOWN IN PHOTOS!

NO DRILLING INTO VEHICLE IS REQUIRED!



Measure from front wheel well back and :
Std Cab— 9 1/2" & 54"
Quad Cab—9 1/2", 46 3/4", 74 3/8"
Crew Cab—9 1/2", 46 3/4", 83 1/4"



Assemble brackets as shown using one long 5/16" bolt and steel retaining nut. (FL669 shown)

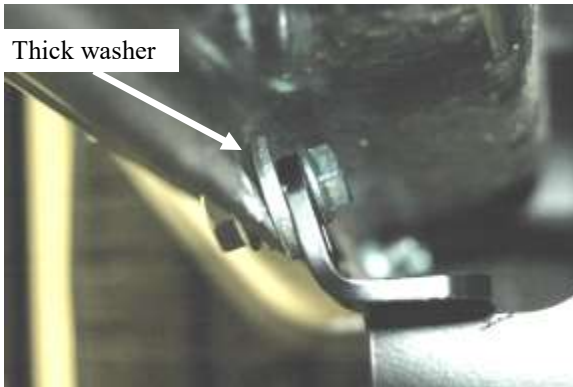


It may be necessary to use a small screw driver to hold against the re-enforcement nut to keep it from turning while tightening the bolt.



On vehicles produced after July 2015 Chrysler has added a reinforcement bracket on the driver side front location.

3B)



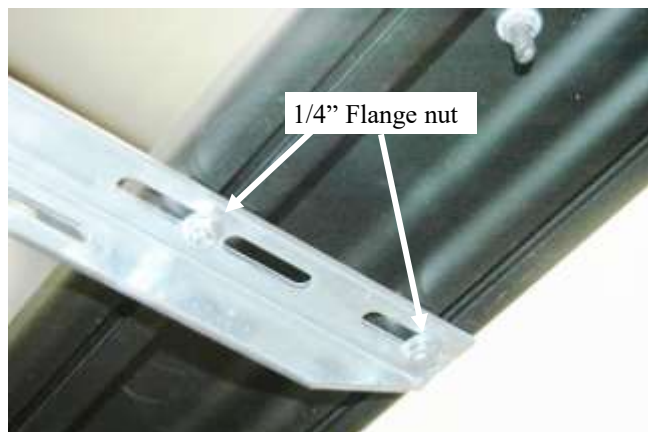
On vehicles produced after July 2015 Chrysler has added a reinforcement bracket on the driver side front location. Install with re-enforcement nut like previously instructed only a thick washer will be placed between bracket and pinch weld as show above.

4)



Attach brackets to vehicle by inserting the re-enforcement nut in the factory obround hole and leave out the 5/16" bolt and nut through the pinch weld at this time.

5)



Slide (1) hex head bolt into both the front track and rear track for each bracket location.

Place the board on the brackets with the bolts through the slots. Fasten with 1/4" flange nuts.

Repeat on other side of vehicle

Fusion Board



Place the board on the brackets and align up on the vehicle. Attach to the brackets using #14 X 3/4" long self drilling screws.

Level board and tighten any and all loose nuts and bolts on both sides.



Fusion Board



Grit Strut Board