

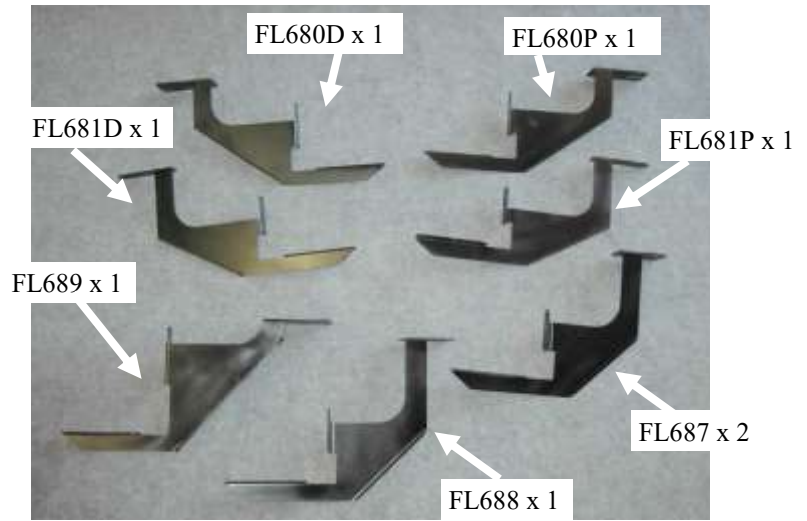
Tools Required

- 1/2" Socket
- 1/2" Wrench
- Ratchet
- 13mm Socket
- 7/16" Socket
- Drill w/ 3/8" Nut Driver
- Small flat blade screwdriver
- Tape Measure

Hardware Included

- BRACKETS
SHOW ON
RIGHT
- 1- BOLT
PACK

No Drilling into Vehicle is Required



Estimated time of
Installation:
45 minutes

Torque Specification:
5/16" Bolts - 19 Ft Lbs.

Locate Driver and Passenger Bracket Locations

Measuring from the front wheel well back, mark the following locations on the pinch weld. There will be factory holes in line with these marks that will be used to mount the running board brackets.

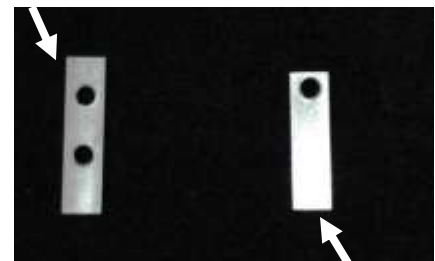
DRIVER

LOCATION 1: 4"
LOCATION 2: 23"

PASSENGER

LOCATION 1: 4"
LOCATION 2: 23"
LOCATION 3: 47"
LOCATION 4: 67"
LOCATION 5: 76-3/4"
LOCATION 6: 111"

RE-ENFORCEMENT NUT x 5

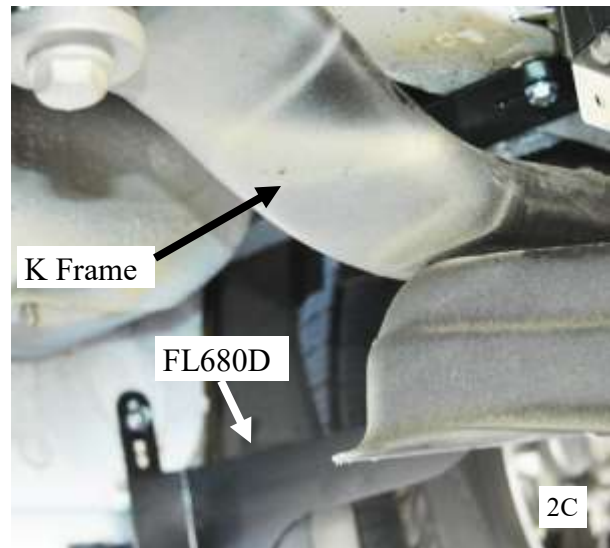
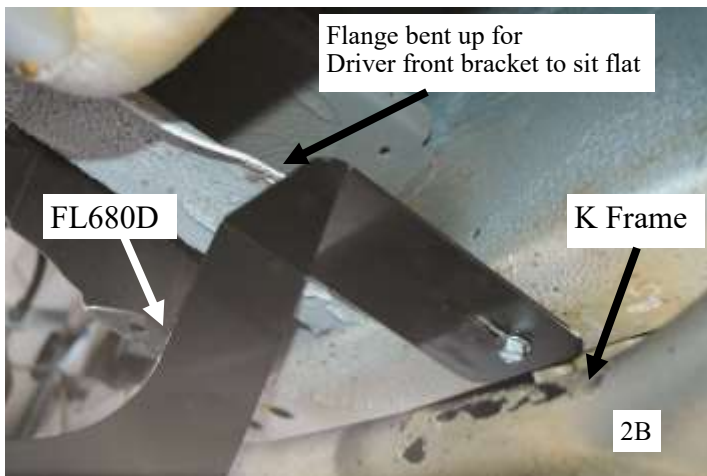
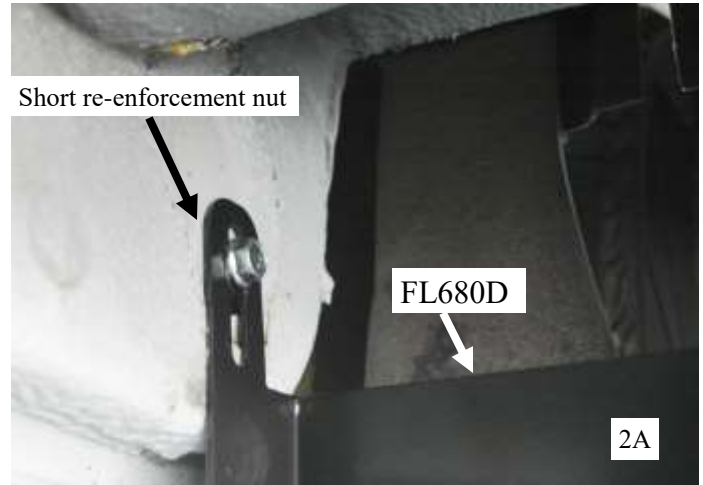
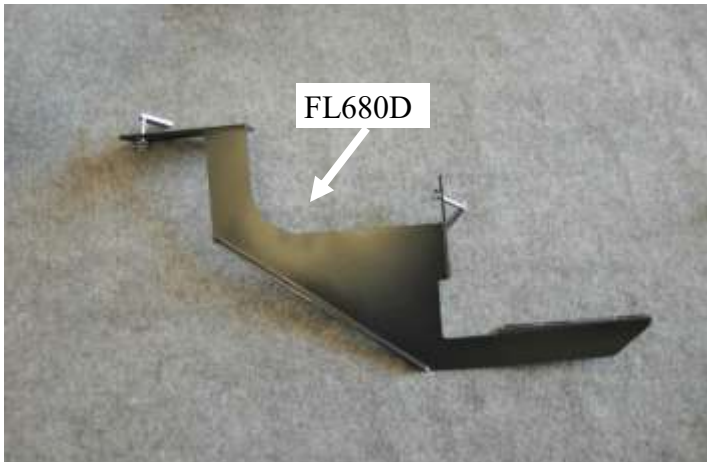


SHORT RE-ENFORCEMENT NUT x 11



Bend flange up to let the front bracket sit flat against the frame rail, this is done on the Driver and Passenger side.

Install in 1st location Driver side



2) Install FL680D in 1st location
Driver side

Note:

Bend flange so FL 680D top flange will fit up against the main frame rail . (Fig 2B)

Insert a 5/16" x 1-1/2" bolt through upper slot on the FL680D and thread into re-enforcement nut only engaging a couple threads.

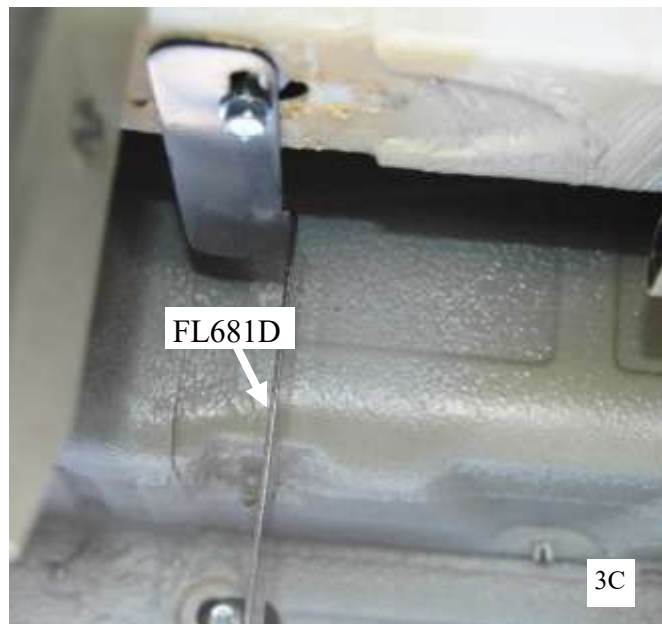
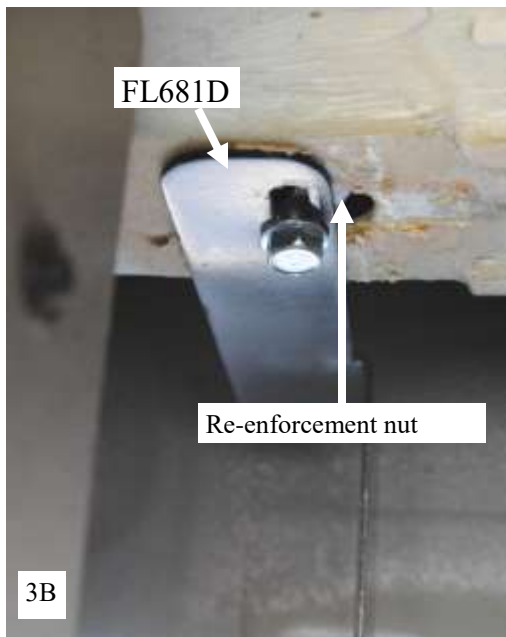
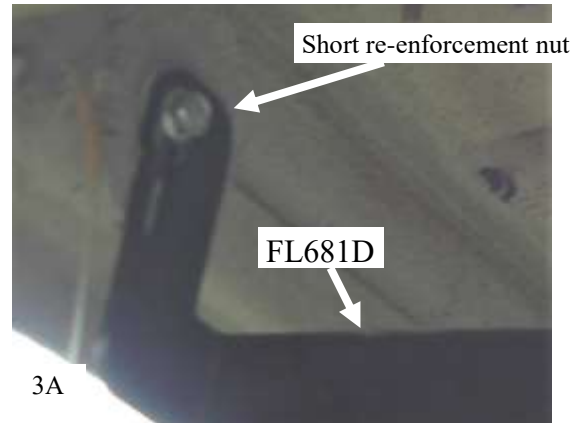
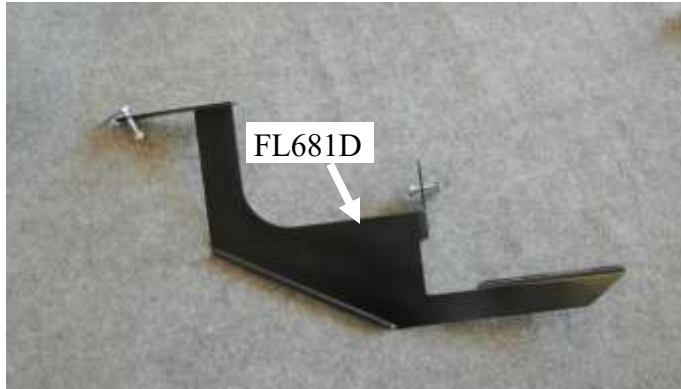
Insert a 5/16" x 1-1/2" bolt through lower slot on the FL680D and thread into short re-enforcement nut only engaging a couple threads.

Remove the rubber plug on the rear of rocker panel with a small flat blade screw driver.

Slide short re-enforcement nut into the lower hole located on the rear rocker panel. **Fig 2A Make sure top flange of the FL680D is between the frame and K frame**

Slide Re-enforcement nut into the hole located on the frame between the K frame. **Fig 2B**

Snug up bracket to the body of vehicle but leave all bolts and nuts loose at this time.



3) Install FL681D in 2nd location
Driver side

Insert a 5/16" x 1-1/2" bolt through upper slot on the FL681D and thread into re-enforcement nut only engaging a couple threads.

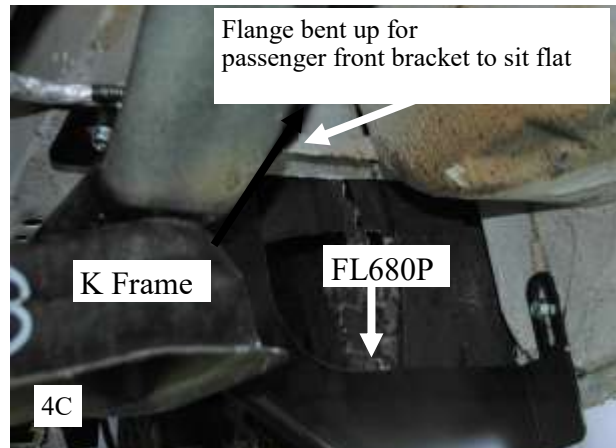
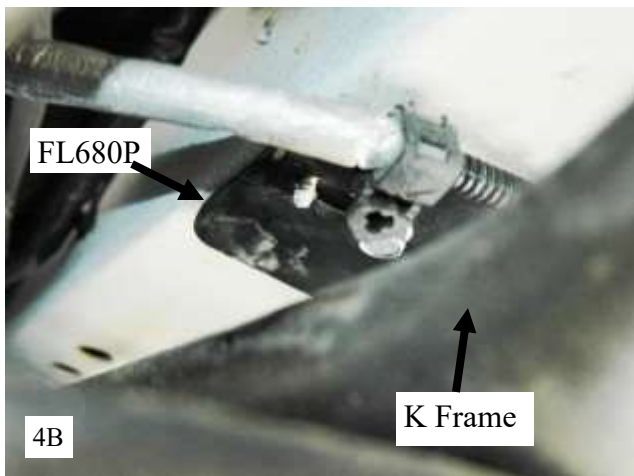
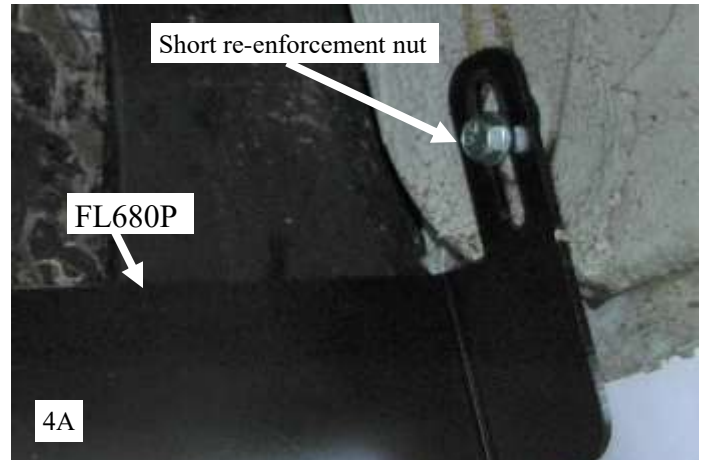
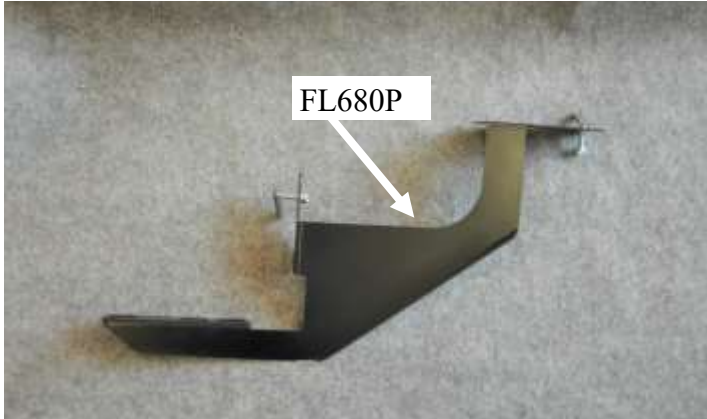
Insert a 5/16" x 1-1/2" bolt through lower slot on the FL681D and thread into short re-enforcement nut only engaging a couple threads.

Remove the rubber plug on the rear of rocker panel with a small flat blade screw driver.

Slide short re-enforcement nut into the lower hole located on the rear rocker panel. **Fig 3A** Slide re-enforcement nut into the hole located on the frame just behind the K frame. **Fig 3B**

Snug up bracket to the body of vehicle but leave all bolts and nuts loose at this time.

Install in 1st location Passenger side



4) Install FL680P in 1st location Passenger side

Note:

Bend flange so FL680P top flange will fit up against the main frame rail . (Fig 4C) pull wire clip off stud to place top of FL680P so the stud come through slot in bracket as shown (Fig 4B) after bracket mounted put wire clip back onto stud to secure wire harness.

Insert a 5/16" x 1-1/2" bolt through upper slot on the FL680P and thread into re-enforcement nut only engaging a couple threads.

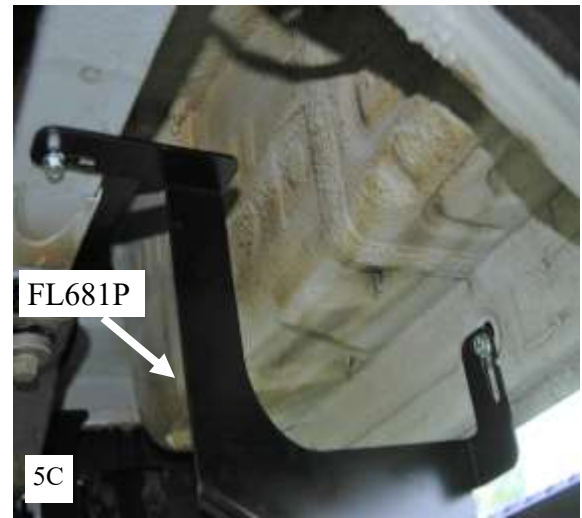
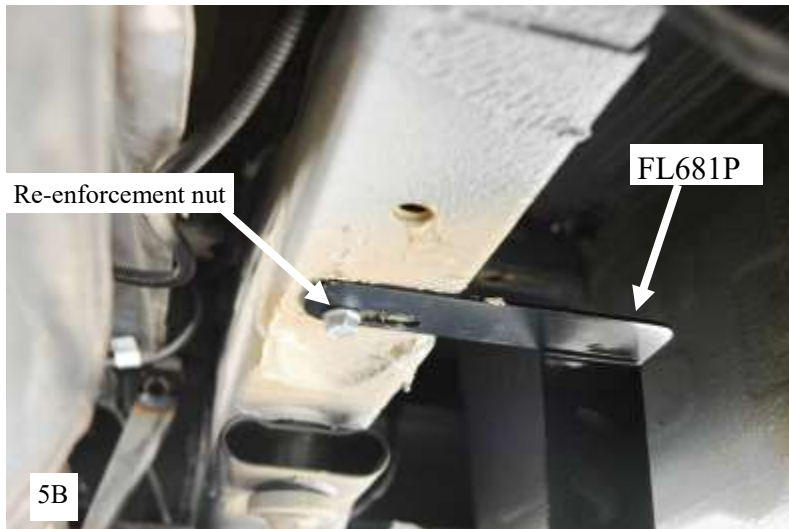
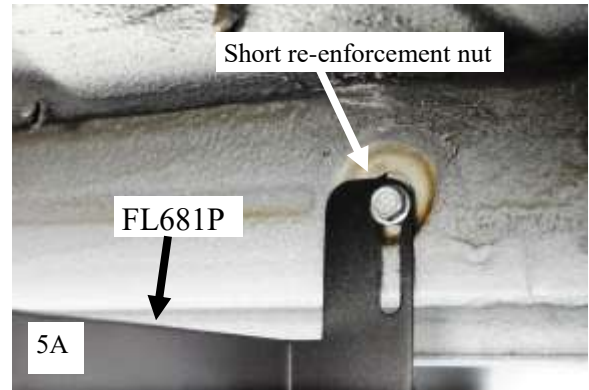
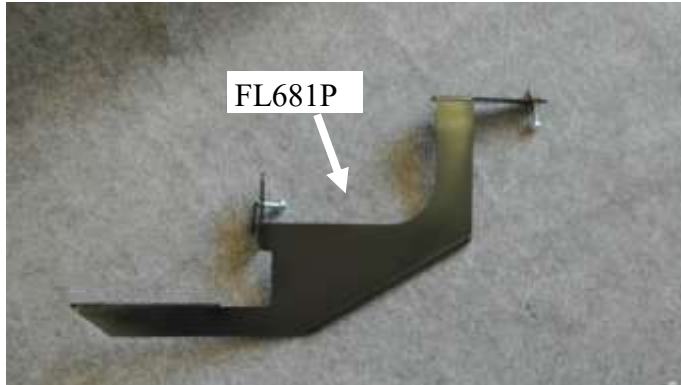
Insert a 5/16" x 1-1/2" bolt through lower slot on the FL680P and thread into short re-enforcement nut only engaging a couple threads.

Remove the rubber plug on the rear of rocker panel with a small flat blade screw driver.

Slide short re-enforcement nut into the lower hole located on the rear rocker panel. **Fig 4A Make sure top flange of the FL680P is between the frame and K frame**

Slide Re-enforcement nut into the hole located on the frame between the K frame. **Fig 4B**

Snug up bracket to the body of vehicle but leave all bolts and nuts loose at this time.



5) Install FL681P in 2nd location
Passenger side

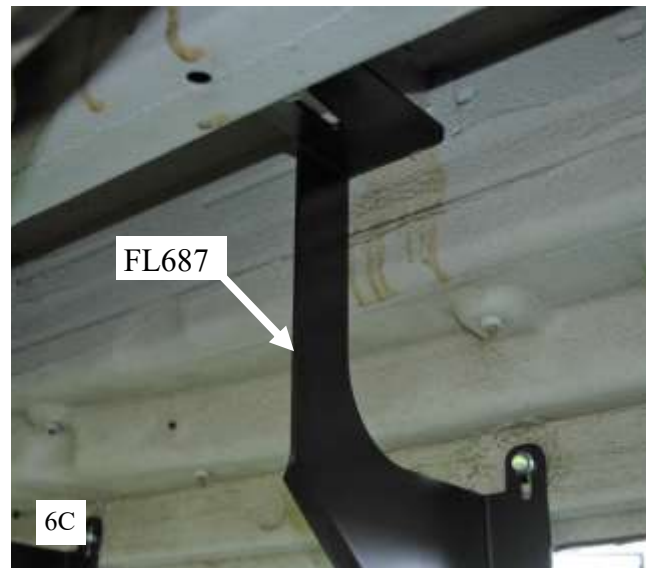
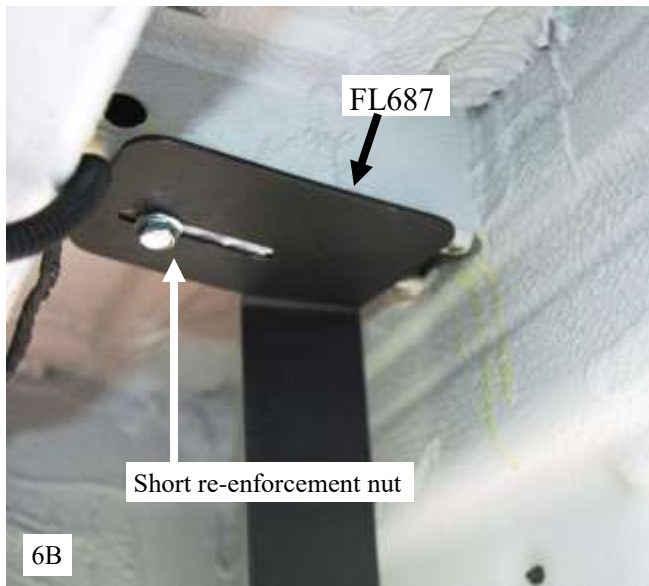
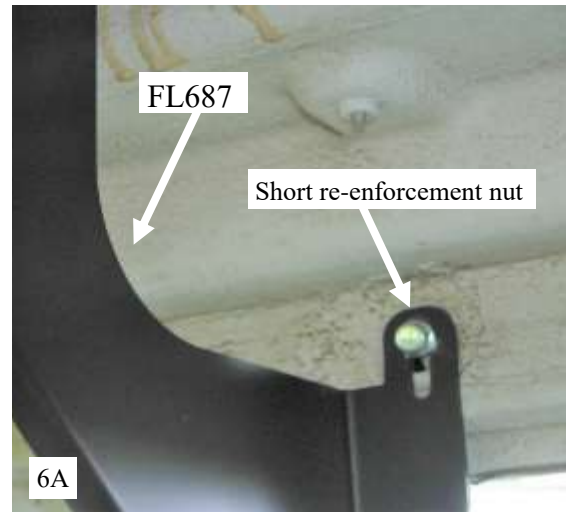
Insert a 5/16" x 1-1/2" bolt through upper slot on the FL681P and thread into re-enforcement nut only engaging a couple threads.

Insert a 5/16" x 1-1/2" bolt through lower slot on the FL681P and thread into short re-enforcement nut only engaging a couple threads.

Remove the rubber plug on the rear of rocker panel with a small flat blade screw driver.

Slide short re-enforcement nut into the lower hole located on the rear rocker panel. **Fig 5A** Slide re-enforcement nut into the hole located on the frame just behind the K frame. **Fig 5B**

Snug up bracket to the body of vehicle but leave all bolts and nuts loose at this time.



6) Install FL687 in 3rd location
Passenger side

Take the small screwdriver that you have been using taking out rubber plugs and scrape the extra rubberized undercoating from the holes to fit the short re-enforcement nut up into.

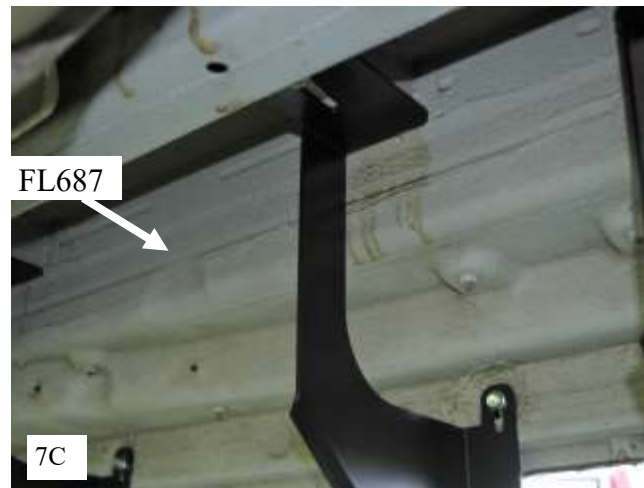
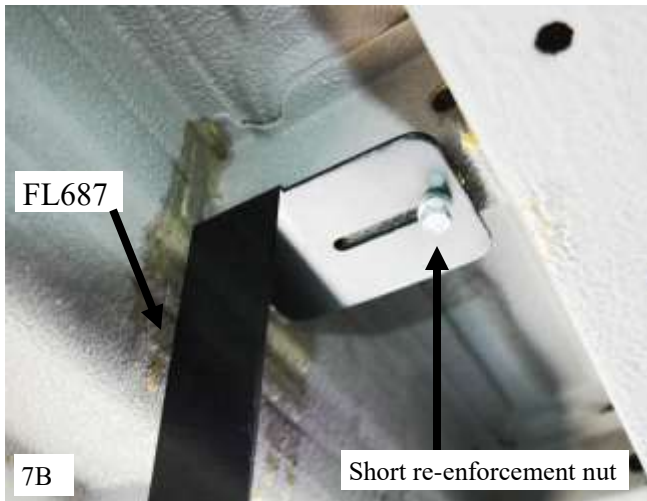
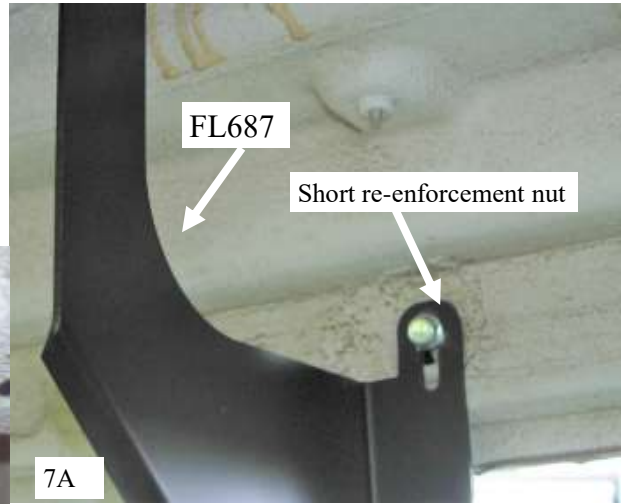
Insert a 5/16" x 1-1/2" bolt through upper hole on the FL687 and thread into short re-enforcement nut only engaging a couple threads.

Insert a 5/16" x 1-1/2" bolt through lower slot on the FL687 and thread into short re-enforcement nut only engaging a couple threads.

Remove the rubber plug on the rear of rocker panel with a small flat blade screw driver.

Slide short re-enforcement nut into the lower hole located on the rear rocker panel. **Fig 6A** Slide short re-enforcement nut into the hole located on the cross brace coming off the frame **Fig 6B**

Snug up bracket to the body of vehicle but leave all bolts and nuts loose at this time.



7) Install FL687 in 4th location
Passenger side

Take the small screwdriver that you have been using taking out rubber plugs and scrape the extra rubberized undercoating from the holes to fit the short re-enforcement nut up into.

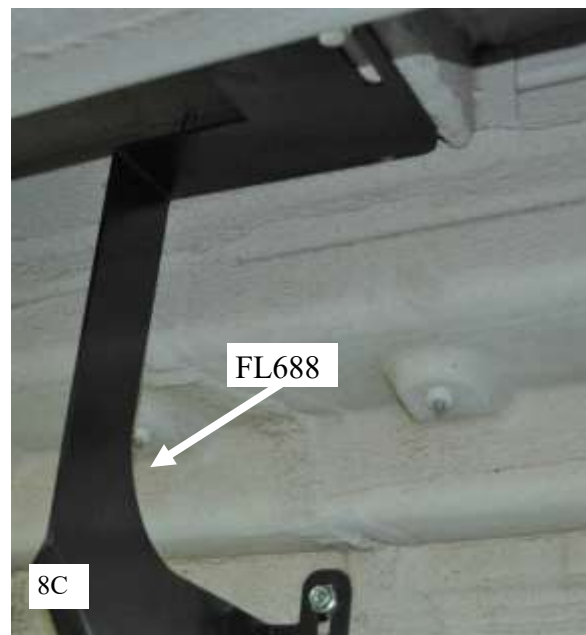
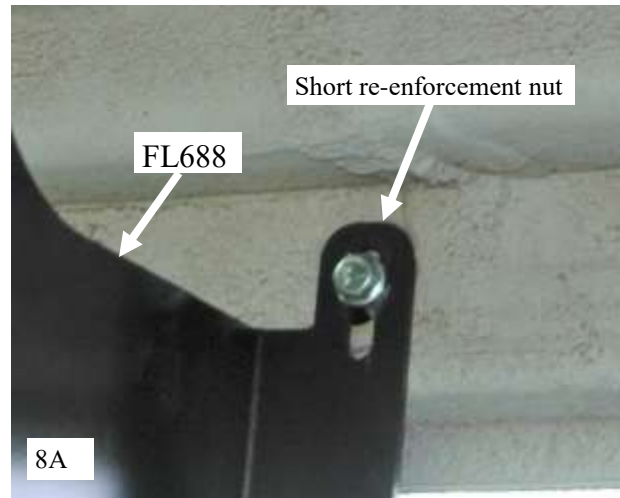
Insert a 5/16" x 1-1/2" bolt through upper slot on the FL687 and thread into short re-enforcement nut only engaging a couple threads.

Insert a 5/16" x 1-1/2" bolt through lower slot on the FL687 and thread into short re-enforcement nut only engaging a couple threads.

Remove the rubber plug on the rear of rocker panel with a small flat blade screw driver.

Slide short re-enforcement nut into the lower hole located on the rear rocker panel. **Fig 7A** Slide short re-enforcement nut into the hole located on the cross brace coming off the frame **Fig 7B**

Snug up bracket to the body of vehicle but leave all bolts and nuts loose at this time.



8) Install FL688 in 5th location
Passenger side

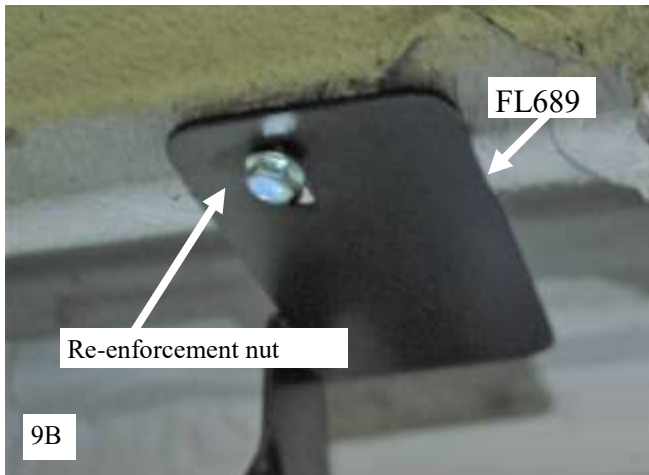
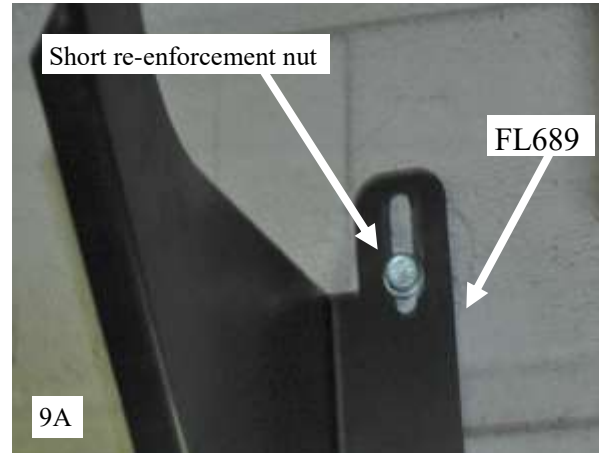
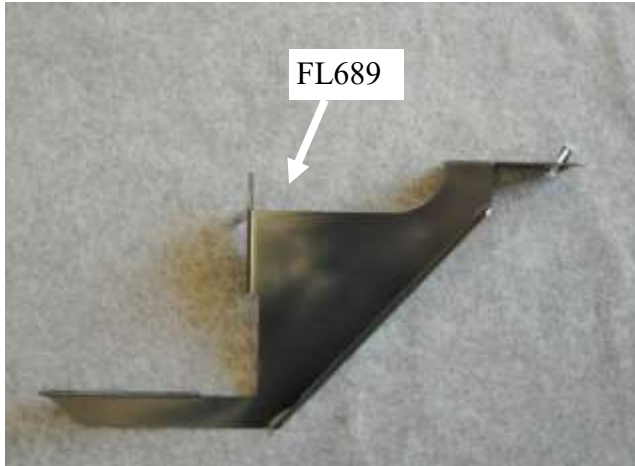
Insert a 5/16" x 1-1/2" bolt through upper slot on the FL688 and thread into short re-enforcement nut only engaging a couple threads.

Insert a 5/16" x 1-1/2" bolt through lower slot on the FL688 and thread into short re-enforcement nut only engaging a couple threads.

Remove the rubber plug on the rear of rocker panel with a small flat blade screw driver.

Slide short re-enforcement nut into the lower hole located on the rear rocker panel. **Fig 8A** Slide short re-enforcement nut into the hole located on the cross brace coming off the frame **Fig 8B**

Snug up bracket to the body of vehicle but leave all bolts and nuts loose at this time.



9) Install FL689 in 6th location
Passenger side

Insert a 5/16" x 1-1/2" bolt through upper slot on the FL689 and thread into re-enforcement nut only engaging a couple threads.

Insert a 5/16" x 1-1/2" bolt through lower slot on the FL689 and thread into short re-enforcement nut only engaging a couple threads.

Remove the rubber plug on the rear of rocker panel with a small flat blade screw driver.

Slide short re-enforcement nut into the lower hole located on the rear rocker panel. **Fig 9A** Slide re-enforcement nut into the hole located in the main frame **Fig 9B**

Snug up bracket to the body of vehicle but leave all bolts and nuts loose at this time.



Place the board on the brackets and align up on the vehicle. Attach to the brackets using #14 X 3/4" long self drilling screws at each bracket location.
Fig 10A

Once the board is in the correct position, tighten all nuts and bolts on the mounting brackets. Repeat the same process on the passenger side.



Boards shown fully installed, Enjoy!