

**Tools required:**

- Ratchet
- 13mm Socket
- 13mm Wrench
- 7/16" Socket
- 7/16" Wrench
- 3/8" Nut driver attachment for a Drill
- T15 Torx bit
- 10mm Socket
- Small Flat blade Screwdriver
- Tape measure

**NO DRILLING INTO VEHICLE IS REQUIRED!**

**FL739**



**6 Pcs Double  
and  
Crew**

1)

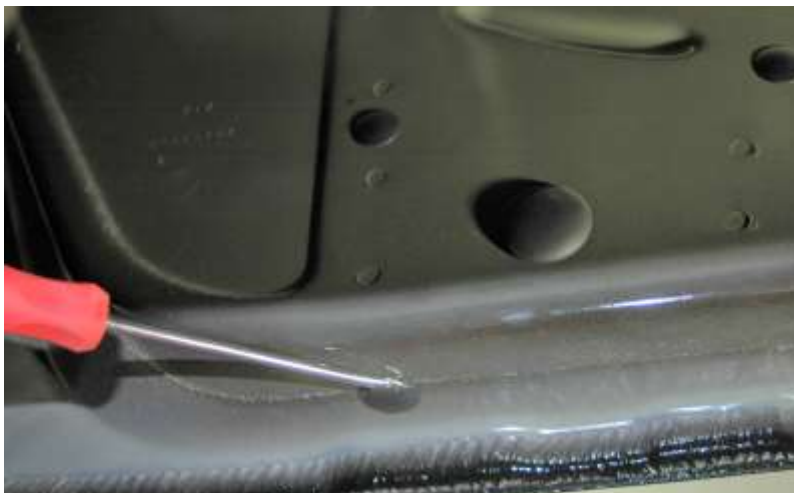


**Measure from front wheel well back**

**Double Cab—14 1/2", 36 1/4 ",72 3/16 "**

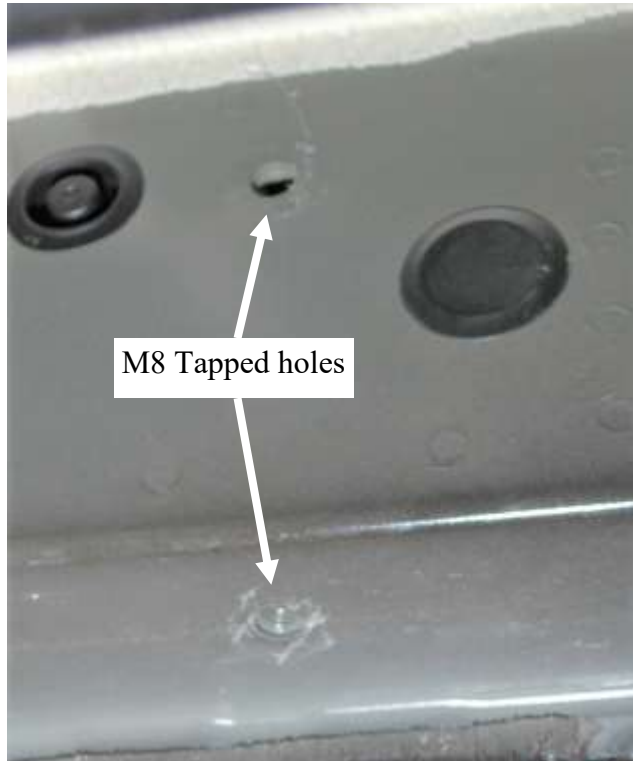
**Crew Cab—14 1/2", 36 5/8", 82 1/2"**

2A)

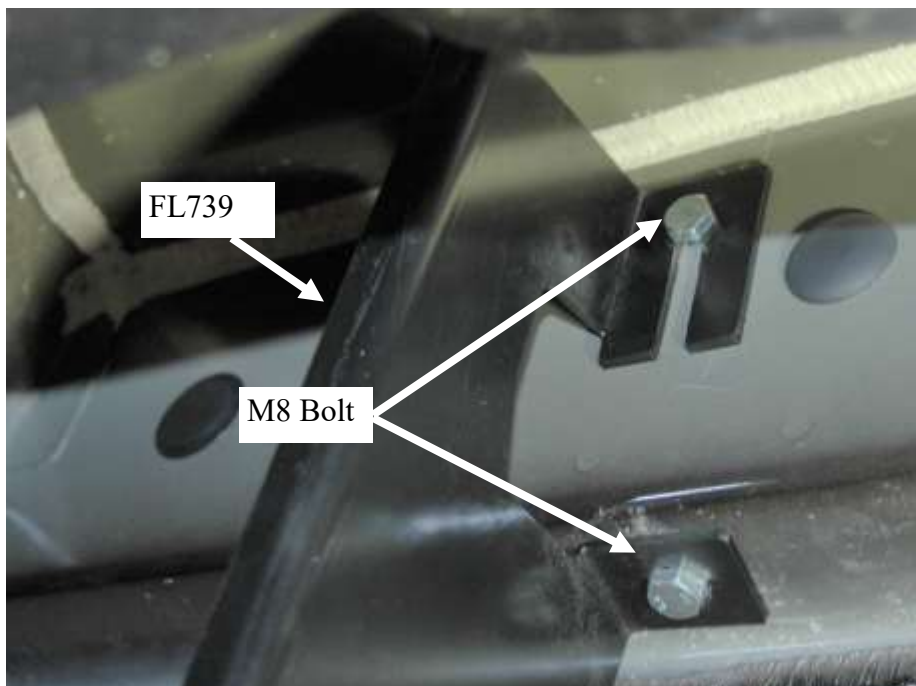


Remove the round plastic cap covering the holes with a screw driver located on rear of the rocker panel. This exposes the M8 threads in vehicle to mount bracket.

2B)



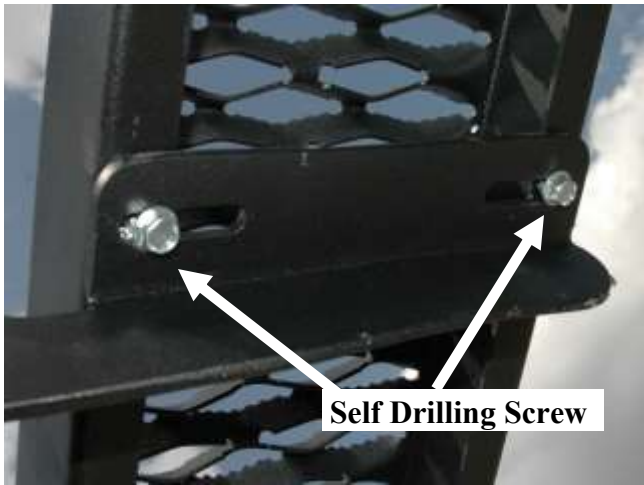
3)



Attach brackets to vehicle by inserting a M8 x 20 mm bolt into each of the threaded holes in back of rocker. Tighten bottom bolt first then the top bolt. For each bracket location.

### For Grip Strut Boards

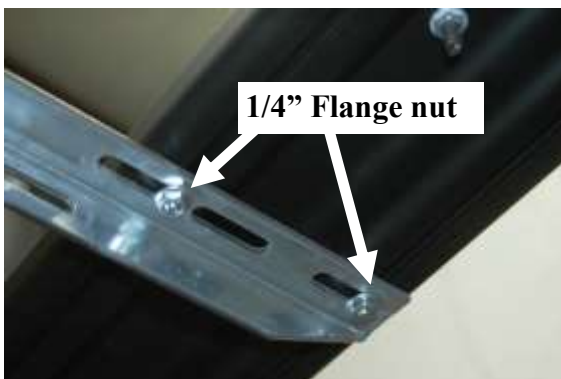
4A)



Place the board on the brackets and center on the cab of the vehicle from front to rear. Attach to the brackets using #14 X 3/4" long self drilling screws. **Using 3/8" Nut driver attachment on a Drill**

### For Fusion Boards

4B)



Slide (1) hex head bolt into both the front track and rear track for each bracket location.

Place the board on the brackets with the bolts through the slots. Fasten with 1/4" flange nuts.

### For Stainless Boards

4C)

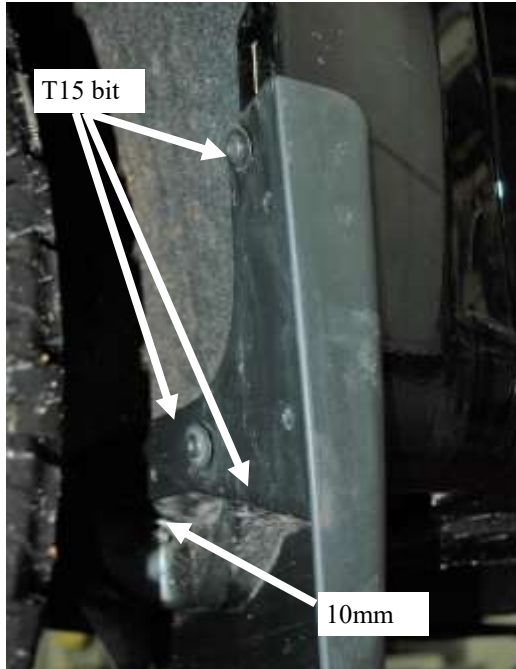


Place the board on the brackets and center up on the cab of the vehicle from front to rear. Attach to the brackets using #14 X 3/4" long self drilling screws into the shoulder of the steel channel on the bottom of the board.

**Using 3/8" Nut driver attachment on a Drill**

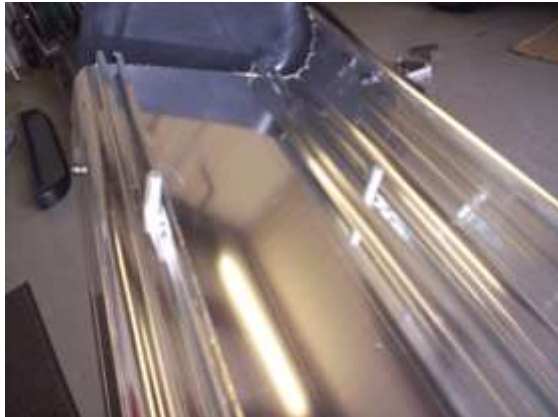
## For Extruded Boards

4D



Remove the small factory stone guard in the front fender well by removing the small screw with T15 and 10mm socket and then unsnap. Keep screws to reinstall the screws.

4E)



Insert one square head bolt into front & rear track for each bracket.

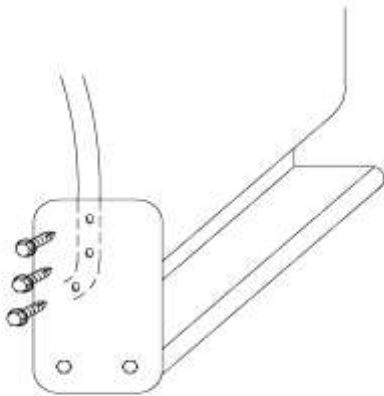
4F)



Attach the stone guard and end caps to the board with 3/8" self threading bolts. (extruded board shown)

## For Extruded Boards

Place the board on the brackets with bolts through slots. Attach with 1/4" nuts loose.



Level board and attach stone guard to vehicle using the sheet metal screws that are included or drill holes in the stone guard in the locations of the screws removed from the OEM plastic stone guard.

**Level the board and tighten all bolts. Repeat steps for the opposite side.**

### For Grip Strut Boards



### For Fusion Boards



### For Extruded Boards

