

Tools Required

- Ratchet
- 1/2" Socket
- 1/2" Wrench
- 3/4" Socket
- 3/4" Wrench
- Drill with 3/8" Nut Driver

Hardware Included

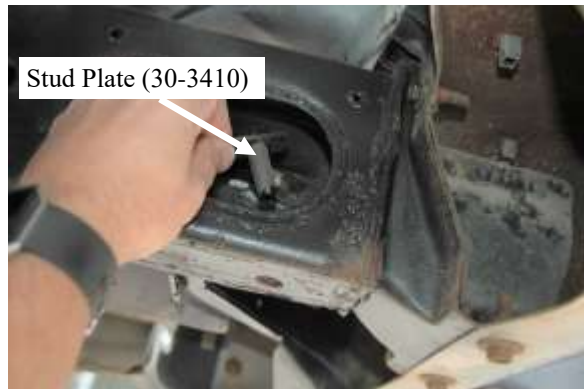
- BRACKETS SHOW ON RIGHT
- 1- BOLT PACK

No Drilling into Vehicle is Required

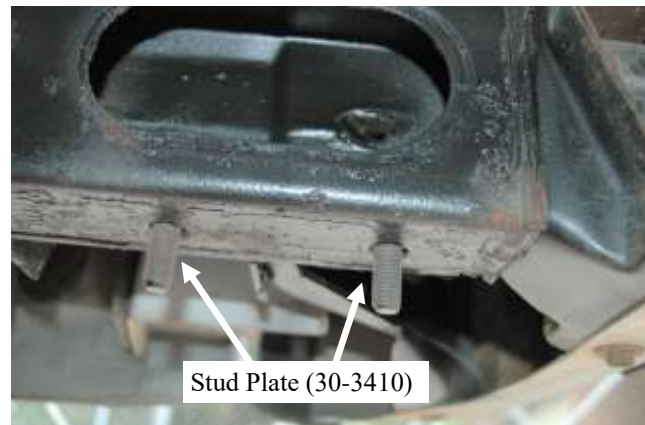


Torque Specification:

1/2" Bolt - 75 Ft Lbs.
5/16" Bolt - 17 Ft Lbs.



- 1) Place the stud plate (30-3410) through the oval cutout in rear frame rail. Insert the threads down through the holes in lower flange of the frame rail. **Repeat to the driver side also.**



- 2) Place the FL503P bracket up onto the threads of the stud plate (30-3410) and place two nuts onto the threads and tighten. **Repeat to the driver side with the FL503D also.**

IN 82369



- 3) Place CB89 between FL503D and FL503P drop 5/16 x 1 1/2" flange bolt through the channel so threads come through the hole in bottom flange of the brackets on each side and put on 5/16 flange nut. Then tighten.

- 4) Place the aluminum grip strut onto the FL503D & FL503P and center. Run #14 x 3/4" drill point self tapper screws up through the slots in the brackets and into the flange of the aluminum grip strut to secure

